

May 2024 Vol 5 Issue 15

MATTER OF FACT

Providing information for Venus Bay, Tarwin Lower
and Walkerville district



A free community newsletter published by

VENUS BAY
COMMUNITY CENTRE

We acknowledge the Traditional Owners of Country throughout Australia and recognise their continuing connection to land, waters and culture.

We pay our respects to their Elders past, present and emerging.

Have you booked a date with Sunny?

Firstly, a huge thank you to all the volunteers that have been helping to get Sunny off the ground especially Phil, Ian, Mick, Paul and Peter for getting our passengers to their destinations safely and on time.

In the first six weeks we've taken Peter, Paul and Lesley and Imogen and Gypsy to Leongatha for lunch, shopping and a visit to the library and organic food store. We've picked up Rupert from Leongatha Secondary College when he wasn't feeling great and got him home and we've taken Meiyu and Zhiqiang to Wonthaggi for shopping. We've also picked up Marg and her son off the Friday afternoon V/Line from Melbourne and got them to VB2 when their car was stuck at the mechanics for repairs.

We've had a wonderful trip to the Prom where the wildlife got up close and personal, a visit to Sale to see an exhibition by a local artist Annameike Mein as well as a trip to Loch and Jam Jerrup to visit artists studios. The Wombat Walkers used Sunny to do a Walkerville walk on a Sunday morning followed by breakfast at the kiosk. Sunny even caught some live music at Archies Creek. Thanks Jill, for proposing that trip!

If you have any ideas about fun group events with 100 km of Venus bay send us a message at info@vbcc.org.au.



Next Month's Group Events

Over the next month we have a trip to a fibre workshop and then we're heading to the Fish Creek Tea Cosy Festival which should be lots of fun. We're also looking at foodie trip where we visit local farm gates and producers. Like and follow the [VBCC Facebook page](#) to keep up to date with future adventures on Sunny.

Scheduled Services

Sunny continues to run the scheduled services but now only runs when there are passenger booking in place. It's best to book 24 hours in advance so we can arrange a volunteer driver but if you're stuck give us a call on 0403 108 199. We may be able to help.

Monday fortnightly from 29/4: VB 2 to Wonthaggi with stops at VBCC, VB1 Tarwin Lower and Inverloch.

The Monday schedule means you can head to Inverloch for a coffee or Wonthaggi for lunch and a shop or to your appointments and then Sunny will get you home again.

Wednesday weekly: VB2 to Walkerville with stops at VBCC, VB1 and Tarwin Lower.

Get to the community lunch and back and hang out with the gang over lunch or a shopping trip to the IGA or Venus Bay Pharmacy from either Walkerville or anywhere in Venus Bay and home again. You can even get to the beach at Walkerville for a couple of hours and ride Sunny home again.

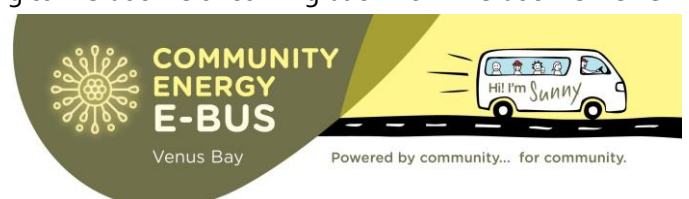
Friday Weekly: VB2 to Leongatha via VBCC, VB1, Tarwin Lower, Koonwarra

This service is gets you to Leongatha with a few hours to eat, shop or catch a movie. You can even stay on and get the late service back if you have more to do

Friday Weekly V/Line Connection: VB2 to Leongatha via VBCC, VB1, Tarwin Lower, Koonwarra

This service connects with the V/Line both ways so if you're heading to Melbourne or coming back from Melbourne we've got you covered.

For full schedule and bookings go to www.vbcc.org.au/e-bus.



Where to Next

Sunny will continue to run on this schedule for the duration of the trial period (mid-June). We will then review and optimise services based on community feedback. We're always open to new ideas so please feel free to share your ideas about how we can best use Sunny in our community.

Hello all,

ANZAC Day was a terrific day for our hall and also our little community. The weather gods held off with the rain and there was many an ANZAC biscuit shared over a cuppa and a chat. We wish to thank everyone who participated, supported and attended this auspicious occasion.

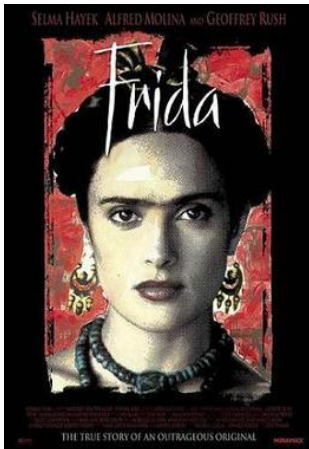
The Easter market was fantastic. So great to see so many smiling faces enjoying the day. The Dog Show was a great addition and we will definitely be doing another next year so keep your pooches practicing their tricks!



Wednesday 1st of May will see the arrival of the South Gippsland Shire Council's innovative **Art Cubes** project to the reserve beside the Hall. Three small purpose built colourful shipping containers will host local artists-in-residence creating an array of amazing things in a variety mediums - pottery, collage work, painting, podcasts, visual movement, dance and many more interesting displays & workshops inside the Hall. So keep your eyes peeled for their arrival and please call in to visit and see whats on or take part in a workshop! Activity from these cubes will culminate in a fabulous **Art Show** opening on **Friday 12 July at 6:30pm** continuing Saturday 14 July and Sunday 15 July between 10am - 4pm. Chat to the creators and maybe buy a piece. Support local 😊



Renovation update – well the Hall is looking good with new walls and paint to the sides and rear, but rest assured the façade has not been forgotten. There are more permits and preparations to finalise but it will be looking as flash as the rest before we know it.



Tarwin Lower Film Society will screen **FRIDA** on Friday 17th May at 7:30pm
MA 15+ Duration 2hrs

DIRECTOR: Julie Taymor **CAST:** Salma Hayek, Geoffrey Rush, Alfred Molina
A biography of artist Frida Kahlo, who channeled the pain of a crippling injury and her tempestuous marriage into her work. "Frida" chronicles the life Frida Kahlo shared unflinchingly and openly with Diego Rivera, as the young couple took the art world by storm. From her complex and enduring relationship with her mentor and husband to her illicit and controversial affair with Leon Trotsky, to her provocative and romantic entanglements with women, Frida Kahlo lived a bold and uncompromising life as a political, artistic, and sexual revolutionary.

Tickets available here: <https://www.trybooking.com/CIEXW>
BYO drinks and food.

Market Dates 2024 for your diary

King's Birthday - Monday 10 June 8am – 1pm

Twilight Market – AFL Grand Final Friday 27 September 3 – 7pm

Melbourne Cup long weekend - Monday 4 November – 8am – 1pm

Donna Schreurs

Tarwin Lower Mechanics Institute Committee

tarwinlowerhall@gmail.com



Australia's
**Biggest
Morning
Tea**

Hello Community

You are invited to our Australia's Biggest Morning Tea. Let's get together and enjoy a cuppa so we can support those impacted by cancer.

Host Tarwin District Auto and Machinery Club

Where Tarwin Lower Hall

Date Sunday 05th May 2024

Time 10 am - 12 pm

Details \$10 per person includes morning tea

RSVP by

Phone/Email tarwindamc@gmail.com



Fish Creek Tea Cosy Festival

FESTIVAL DATES: 18-26 MAY 2024 | 2024 Festival: Celebrations & Celebrities

This wonderfully quirky festival has an amazing array of activities, displays, events and happenings: have a look at the full program here: <https://teacosyfestival.com.au/all-festival-events/>

We'll be doing a SUNNY trip on MARKET DAY – 25 MAY – jump onto [humanitix](#) to book your spot!

humanitix

COMMUNITY ENERGY E-BUS
Venus Bay
Powered by community... for community.

Hi I'm Sunny

MARKET DAY

SAT MAY 25

Fish Creek Tea Cosy Festival

25th May

FISH CREEK TEA COSY FESTIVAL OUTING

Hosted by **Venus Bay Community Centre**

Price **\$10 AUD + BF**

Get tickets

the mostly
CLAY made

Winter makers market

Meeniyan Town Hall
Sat 8th June 10-2pm

put it in your diary!

MEENIYAN MAKERS MARKET

We're back this King's Birthday Weekend with another wonderful Makers Market, all under cover at the Meeniyan Town Hall. So pop it in your diary.

Stallholders include many new and returning South Gippy makers selling their unique handmade pieces as well as locally grown cut flowers and plants.

Devonshire tea will be available with delicious scones made on site by the Meeniyan CWA.

Meeniyan Town Hall

Saturday June 8th (King's Birthday Weekend) 10am until 2pm.

Thank you !!



The students of Tarwin Lower Primary School absolutely love their wonderful new playground equipment!

This would not have been possible without the support of the Venus Bay and Tarwin Lower communities and businesses.

We were overwhelmed by the community generosity.

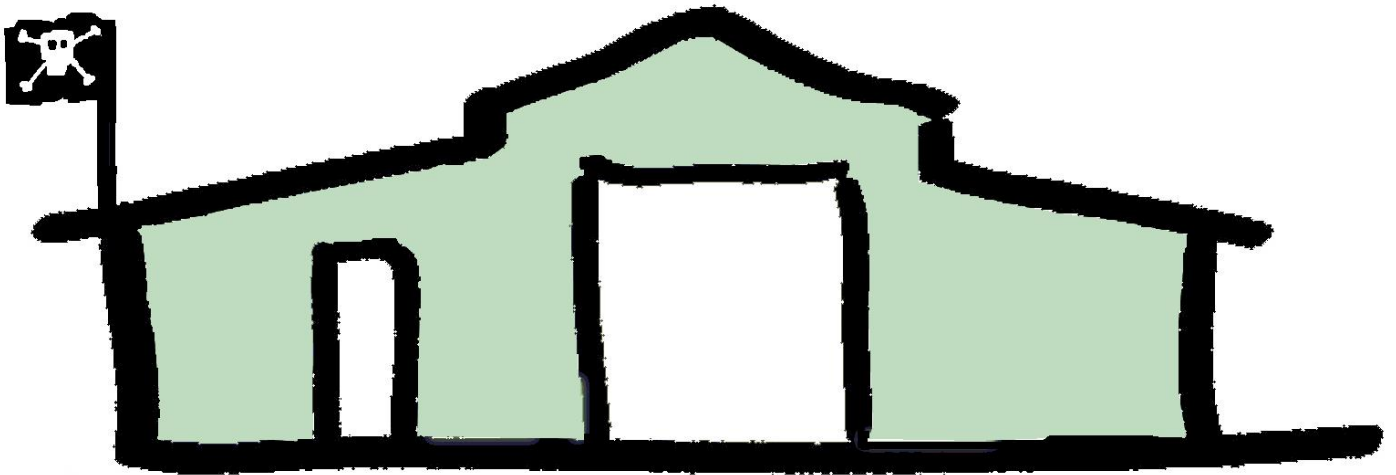
The students, staff and families wish to thank everyone who donated goods, services or money, fundraised, or attended events that raised money for our school.

Your support is greatly appreciated.

CONGRATULATIONS TO OUR MEN'S SHED

The Tarwin Lower Venus Bay & District Men's Shed have been successful in their grant to Victorian State Government DFFH for \$64,260. While funds have been provided, the Men's Shed still needs to raise about \$30k to contribute cash and in-kind support to the project.

One of only 2 grants to Men's Sheds in our region – the funds will be used to create a 12 x 5 m extension to an existing shed to create a more community focused space for members and other community groups. Men's Shed President John Hyett was pleased with the recent announcement and knows the funds will be put to good use for members.



A little bit of history:

DID YOU
KNOW?

That the Venus Bay Men's Den (as it was originally known) was proposed in 2007 by a group of like minded and community focussed men who got together at the Venus Bay Community Centre to make a plan of how to get a Men's Shed facility here in Venus Bay. The original site proposed was along Canterbury Road, next to the Community Centre. Lots of talking, negotiating with council about suitable site and applications for funding happened over many years.

During the establishment phase, the VBCC auspiced the Men's Shed group for the build, the lease and grant application for the original building from Department of Planning and Community Development DPCD. By 2009 the planning approvals were in place and site management had started in Lees Road, Venus Bay. By 2012 the Men's Shed facility was well and truly completed; the group had achieved a lot under this arrangement and were able to form an independent incorporated association.

Jump forward 12 years, now with 53 members and a few extensions later, the Men's Shed are an important part of our community and continue to provide a place for men to gather and contribute to wider community projects.

Open Wednesday and Saturday from 10am to 1pm people can support the Men's Shed with a selection of locally made wooden goods in their little shop – Woody Goods - at 190 Lees Road, Venus Bay.

For more info : vbtlmensshed@gmail.com

What is a Men's Shed?

The modern Men's Shed is an updated version of the shed in the backyard that has long been a part of Australian culture. Men's Sheds are found in many cities and towns around Australia and continue to spring up internationally.

FACTS & FIGURES

1,200+

 **Sheds**

Men's Sheds across Australia (that's more Men's Sheds than Macca's restaurants!)

12

 **Countries**

More than 2,500 Men's Sheds operate in 12 countries

30

 **Years**

The first Men's Shed was established in 1993 (Goolwa, South Australia)

50,000+

 **Australians**

More than 50,000 Australian men participate in Men's Sheds



**AUSTRALIAN
MEN'S SHED
ASSOCIATION**
Shoulder to Shoulder

Men's Sheds in Victoria

The Victorian Men's Shed Association (VMSA) was formed in 2005 and became an Incorporated Association in 2007 and is the Peak body that represents the Men's Sheds in Victoria. There are in excess of 335 sheds operating in Victoria. Our purpose is to provide a forum for Victorian Men's Sheds to exchange ideas, share resources and experiences, network and find support. We promote the profile of Men's Sheds and "shedding" activities to the Victorian community and represent the interests of Victorian Sheds to government, businesses and community organisations. We also provide practical advice, assistance and support for Sheds.

What are Men's Sheds

The personal or backyard shed is a cultural icon in Australian history. A shed was a space in the backyard where men: grandfathers, fathers and sons, would go to tinker, play, fix, repair and make items.

Where skills were learnt, reinforced and handed down through the generations. It was a bloke's personal space, where they could teach, learn, talk and discuss, and solve the problems of the world. During the 1990's saw the establishment of a number of community sheds, that allowed for men who did not have their own shed to participate with other men in a community based facility to participate in shed activities. These community sheds grew out of necessity due to people downsizing their homes in retirement, moving into retirement villages or apartments and units, and no longer having the room to have their own shed. Today we know these facilities as Men's Sheds.

What is their purpose

The main purpose of a men's shed is to provide for the health and well being of the men attending the shed. Assisting to reduce the social loneliness, isolation and depression caused through unemployment, retrenchment, retirement or other life changing conditions. Sheds provide a safe and friendly environment where the men can talk, learn new skills, pass on their life skills and be a part of a bigger community and be involved in meaningful activities and projects.

Locals celebrate 10 years of open stations in Walkerville

Author: Crystal James

Locals and CFA volunteers recently enjoyed dinner together to mark the 10th anniversary of Tarwin Lower and District's satellite station in Walkerville.



Val Latham is one of the residents behind the open station evenings, which are held monthly over the summer season.

She has lived in Walkerville with her husband Ian since the 1980s.

"It feels like a century ago now. But one summer I was reading Susan Duncan's memoir, *Salvation Creek: An Unexpected Life*. After moving to a small town, Susan started a community dinner to bring locals together. And I thought, wow, we could do something like that in Walkerville," recalls Val.

"We ran the idea past Captain Mick Moore, and here we are 10 years later. It's so wonderful to see new and familiar faces each season."

Brigade Captain Mick Moore has fond memories of Val's early support for a CFA presence in Walkerville, which today has a population of 130 people.

"Val has always been passionate about fire education. We ran fire awareness sessions in the community long before the satellite station opened in 2014," he explains. "We even held them on Val's porch if we couldn't meet in the caravan park or on a vacant block.

"The residents have been instrumental in supporting the CFA. They persisted for 10 years, regularly petitioning the Council and State Government. It really is their station.

It's easy to understand why locals are so passionate about conserving the area. The secluded bays with postcard views of Wilsons Promontory are surrounded by more than 4,000 hectares of natural coastal reserves – including a 1km foreshore campground on Waratah Bay in Walkerville North.

Brigade volunteer and Walkerville resident Jo Wainer leads the Watch for Wildlife local group who are working to reduce the number of wildlife killed and injured by vehicles.

Jo says: "We are blessed to still have native animals in our area, particularly in the Cape Liptrap Coastal Park. It's home to koalas, monitor lizards, lyrebirds, wombats and wallabies.

The forest and its residents are already feeling the effect of climate change, and the CFA is critical to protecting them from wildfire."

Jo is one of eight CFA volunteers living in Walkerville on the traditional lands of the Brataualung people.

The evening concluded with guest speaker, South Gippsland Councillor Scott Rae who commended all the CFA volunteers and residents for achieving the 10-year milestone.

"South Gippsland has the largest uptake of volunteering in Victoria," said Cr Rae. "Which really shows just how engaged we are with our communities."

Open stations at Walkerville will recommence in December 2024. Locals and visitors are welcome to bring a plate, or just come along to enjoy a meal and hear from brigade volunteers on the latest fire season updates.

Stay up to date via facebook.com/TarwinLowerDistrictFireBrigade



CFA volunteers and locals celebrate 10th anniversary of open stations at Tarwin Lower and District's satellite station in Walkerville.



Left to right: Tarwin Lower and District Fire Brigade Captain Mick Moore, resident Val Latham and 1st lieutenant and resident Rod Hill.



Men's Social COOKING GROUP

6 weeks starts April 29th

\$10 per week

Easy, budget recipes and more.

Designed for all skill levels.

Learn to cook or come along for a social meal with other men.

5.00 - 6.30

Bookings essential.

5663 7499

or drop in for more information.

Fire Danger Period ends 1 May 2024

Good news! The Fire Danger Period for South Gippsland will be lifted on 1 May 2024.

It's still a good idea to practice good fire behaviour.

Are you burning-off safely?



Have you checked your council's local law regarding when and where you can burn off?	You need to check your council's website for local laws to ensure you're allowed to burn off. Your council may have regulations and certain days that you can burn. If CFA has declared the Fire Danger Period for your municipality, open air burning is prohibited unless a specific permit is obtained. Fines for burning off during this time without a permit can be up to 120 penalty units and/or up to 12 months' jail.
Have you checked the weather?	Check weather forecasts for the day of your burn-off and a few days afterwards. If more than light winds you should postpone your burn-off. Also check it won't be too windy on following days, as the wind can reignite your burn.
Do you have an adequate water supply?	You need to have enough water to extinguish a possible outbreak. For small fires, it's recommended you either have access to a hose or at least 10 litres of water. For larger fires appropriate firefighting equipment and/or machinery may be required.
Clean up around your burn site.	Create a 3-metre clearance of all flammable material around your whole burn-off site.
Have you registered your burn-off?	Register your burn-off by calling 1800 668 511 . This will ensure CFA won't be called out unnecessarily to your burn-off.
Have you notified your neighbours?	Ensure you are considerate of your neighbours when burning off. Notify them if you are in close proximity and the smoke may affect them. Also burning items that are wet or green may cause excessive smoke.
Have you put it out properly?	Make sure there are enough people to monitor, contain and extinguish your burn-off safely and effectively. Ensure that your burn-off is completely extinguished before you leave it.

KNOW YOUR BINS – and get to know your neighbours 😊

Residents in Venus Bay have a compulsory garbage and recycling collection service which runs for six months of the year from 1 November to 30 April each year.

That means the YELLOW and RED bins will NOT be picked up starting this week – only the green bins with coloured lids will be collected.



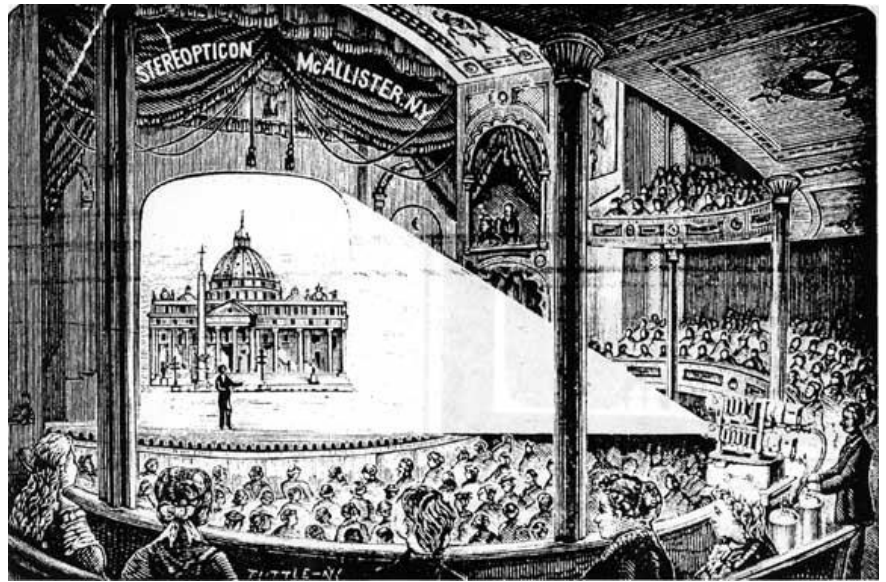
While the collection on Monday morning means it's often difficult for our part time residents to take their bins in – it's an opportunity to get to know your neighbours – perhaps they can bring them in for you? Bins staying out is a signpost that your property is not attended for potential vandalism or theft.

What items can go in my bins?

	Recycling	Garbage	Green Waste
✓	<ul style="list-style-type: none"> Rigid plastics codes 1 - 7. Cardboard and paper. Glass bottles and jars. Aerosols and tin cans. Aluminium foil and cans. 	<ul style="list-style-type: none"> Household garbage. Food scraps. Wrapped noxious weeds. Clothing and fabric. Plastic bags, plastic wrap and polystyrene. 	<ul style="list-style-type: none"> Garden prunings. Grass clippings. Weeds. Small logs and raw timber off-cuts (up to 10cm in width and 30cm in length). Leaves.
✗	<ul style="list-style-type: none"> No plastic bags, plastic wrap and polystyrene. No pyrex, crockery or broken glass. No garbage. No green waste or food scraps. No nappies. No clothing or fabric. No electronic / electrical items. No batteries. No globes. 	<ul style="list-style-type: none"> No recyclables. No green waste. No chemicals. No trade waste. No electronic / electrical items. No batteries. No light globes. No liquids. 	<ul style="list-style-type: none"> No household garbage or food scraps. No bricks, rubble, sand or dirt. No plastic bags. No plant pots. No large logs or stumps. No treated or painted timber.

Magic Lantern Show

The Leongatha Historical Society will be holding a Magic Lantern Show on **Saturday 11 May at 7.30 pm** at Meeting Room One Leongatha Memorial Hall. This is a fund raising activity the charge being \$10 for members and \$15 for non members. Supper will be served after the show.



LADIES ARE ASKED TO PLEASE REMOVE YOUR HATS
AND GENTLEMEN REQUESTED TO KINDLY REFRAIN FROM SPITTING AND SWEARING
DURING

PROFESSOR MURGATROYD'S ENTERTAINING AND EDUCATIONAL MAGIC LANTERN PERFORMANCE

THIS ECLECTIC CORNUCOPIA OF SLIDES TAKES YOU BACK OVER 100 YEARS TO ONE FORM OF ENTERTAINMENT FOR THE PEOPLE BEFORE THE INVENTION OF MOVIES AND ALL THAT MODERN GARBAGE

YOU WILL SEE MELODRAMAS, PATHOS, COMEDY, HISTORY, STORIES TO RAISE YOUR SPIRITS AND OTHER STORIES TO STOP YOU DRINKING YOUR SPIRITS

SPECTRES AND DEMONS HIDEOUS ENOUGH TO CURDLE YOUR BLOOD

GOLDFISH SWIMMING PEACEFULLY IN A BOWL

MUCH MUCH MORE

AND

A MAN EATING RAT

SUPPER PROVIDED AT THE END OF THE SHOW

In the days before movies Magic Lanternists would move around the countryside putting on performances in local halls. Magic Lanterns were a form of slide projector and large coloured slides were used to tell stories, news and pictures of other places in the world.

John Hyett of the Leongatha Historical Society has a large collection of slides and will select some of these to entertain the audience with a show from days gone by.

Contact the Society for tickets by messaging us on Facebook

(03) 5662 2492

leongathahistory@gmail.com



What is fast fashion?



Fast fashion can be defined as cheap, trendy clothing that takes ideas from the catwalk or celebrity culture and turns them into garments at breakneck speed to meet consumer demand. The idea is to get the newest styles on the market as fast as possible, so shoppers can snap them up while they are still at the height of their popularity and then, sadly, discard them after a few wears. The fashion industry is one of the world's largest polluters and Australia is now the second highest consumer of textiles per person in the world, after the USA. Each Australian disposes of an average 23 kilograms of clothing to landfill each year.

Well what can we do about it? To start you on your way to ditch fast fashion, think of the most stylish women of all time. Were they wearing the latest runway knockoff? No they were wearing classic pieces of clothing that stood the test of time? Don't believe me, then search "the most stylish women of all time", what were they wearing? A cheap runway fast fashion fad or classic stylish quality clothing that is still fashionable today?

My top tips on how you can avoid the fast fashion trap.

1. Create a staple wardrobe with classic pieces which will break the fast fashion cycle. Most staple wardrobes include 10 to 15 key items that can be mixed and matched to create different timeless looks, neutral colors work best. Spend a little more money to get quality pieces, trust me you will save a fortune in the long run, not to mention stop contributing to fast fashion waste. This doesn't mean you need to throw all your fast fashion away, just replace it with what I like to call "Classic Fashion" when the garment has seen better days.
2. Ask yourself do I really need the latest trend? Will it be fashionable in 6 months or a years time, or better yet will it even last 6 months or a year? Will it work with my staple wardrobe?
3. Never throw used clothes into landfill, most op-shops, councils and recycling centres have a non-saleable fabric recycling option.
4. Mend your clothes! So many times in the recycling centre great items are donated because they have a missing button, broken zip or a seam has simply come undone. There are many people whom can mend or repair clothing for a fraction of the cost to replace the item. Don't just think clothes, this includes, shoes, belts and handbags also.
5. If you still need your fast fashion fix, why not start shopping at second hand stores, op shops or recycling centres. I guarantee you will find fast fashion that is merely weeks or months old, most likely only worn once or twice.
6. It used to be that the hardest thing in life is to convince a shopper was that a bargain still costs money! Nowadays, it is to convince people that it is costing us more than money, it is costing us our planet!



At the Venus Bay Community Recycling Enterprise, we are doing our best to reduce waste, find ways to upcycle, recycle and redistribute AND we have some fabulous SLOW fashion!! 😊

Workshop cost
is \$60
phone: 5663 7499

BYO lunch.

**All materials, tea and
coffee supplied.**

Book your \$10 seat
on the bus



TUESDAY 7TH MAY

8.30 AM - 5 PM

Bus leaves from Venus
Bay. Can pick up in
Inverloch and
Wonthaggi

ORGANIC FIBRE WRAP WORKSHOP

WITH JENNIE-MAREE
TEMPEST AT HER STUDIO IN
JAM JERRUP

www.vbcc.org.au



**COMMUNITY
ENERGY
E-BUS**

Venus Bay



Powered by community... for community.

TALC – Tourism and Local Commerce Association – previously known as BARBA (Beach and Riverside Business Association) has now been formally brought to a close with Consumer Affairs Victoria.

The TALC Committee have written to all financial members to advise, and have provided the option to either fully refund the 2023 membership, or donate the \$500 fee to Tarwin Lower Primary School, Venus Bay Surf Life Saving Club or to local wildlife volunteer Sue Moore.

It appears that now is not the right time for a Tourism and Business Association to be operational in our local area.

All the momentum that the Committee gained last year stalled upon the resignation of our President in August 2023. After a number of call outs for nominations, and with zero nominations received, for the important role of President, the Committee have been left with the decision to formally close the Association. In the eyes of Consumer Affairs Victoria, TALC is unable to continue without the key role of a President to lead and advocate for the local tourism and business community.

BEACH ONE RAMP MAINTENANCE REQUEST

Over the summer, many residents, visitors and community members expressed frustration and concern that the access to the safely patrolled beach was prohibited to them due to the state of the ramp access to Beach One, Venus Bay.

A group of concerned community members have met to discuss how proper maintenance can allow not only better beach access, but to ensure safety of pedestrians particularly given the ramp caters for the lifesaving vehicles.

The problems identified at the meeting and demonstrated in attached photos:

- Disrepair of fence along ramp
- Sand barrier has collapsed
- Sand covering fence
- Top rail missing or fallen off
- All this has caused the sand to pile up close to the fence
- Pedestrians cannot walk close to the fence and cannot use it to steady themselves.



The issue was of particular concern to older community members, those with grandchildren, or who had limited mobility who were not able to access the Beach One area where the Venus Bay Surf Life Saving Club provides a patrolled area. The access ramp is difficult to navigate in its current state.



Furthermore, concerns were raised about the shared ramp that sees thousands of pedestrians over summer and the speed at which the Surf Life Saving vehicle must travel to get up the ramp – there is a worry this presents a safety risk to community members and life-saving volunteers.

A request has been sent to Parks Victoria along with other local and government stakeholders to meet with concerned community members to address the issues.

Tarwin Lower Union Church



Regular services:

Saturday 5.30 p.m.

Catholic

Liturgy/Communion on the Saturday before the 1st, 2nd, 4th and 5th Sunday of the month

Saturday 4 p.m.

Mass before the 3rd Sunday

Sunday 10.30 a.m.

Anglican/Uniting

Our mission is to be a welcoming, sharing Christian community

Coming up:

- * Women's discussion group: Thursday 2nd, 16th, 30th May at 10.30 a.m.
- * KYB (Bible study): Friday 10th and 24th May at 1.30 p.m.

VENUS BAY ANGLING CLUB will hold the May Fishing Competition starting at 12 noon Friday 17th May and finishing at 3.00 pm sharp Sunday 19th May. There will be a weigh in each day at the club between 4-6pm Friday, 4-6 pm Saturday, and 2.30 - 3.00 p.m. Sunday when the winners will be announced. 1st Prize for financial members is a \$50.00 voucher from a local business. Our BBQ will be held on Saturday night, meat provided, and members and visitors are asked to bring along a hot dish/salad/dessert to share. For non members there is a \$5.00 entry fee for the competition which

covers you for the BBQ Saturday night as well. We will have our raffle on Saturday night (with some great prizes) as well as the members draw. Come along and join in the fun.



Hello all from Cr. Sarah Gilligan

First things first, yes yes I know the streetscape looks scrappy and the weeds are growing fast, Council is still very much playing catch up after the big Mirboo North storm event, the environment team are keen to finish it too, planting and clean up will be in May!

The bits I love about Council

Since getting onto council I've been the representative on the Audit and Risk Committee, the Australian Coastal Council Association, the Municipal Association of Victoria's Emergency Management Committee. I've been part of driving a state and increasingly national conversation around coastal hazard planning with a natural adaptation and emergency management support focus. At heart I'm a risk nerd, I think our emergency service volunteers are incredible and I take their wants and needs with me in all strategic conversations.

Its budget time of year, time to get your submissions in, following is information to help you think about how your project or idea might fit in with the strategic direction South Gippsland Shire is taking when it comes to Coastal Communities.

Hopefully some of the things you want fixed/invested in via the council budget are already included in the current South Gippsland Shire Advocacy Priorities. This document has full council support and gives all of us the agency to go and lobby hard and prioritise state money expenditure on our coastal towns. Find projects and ideas that align with those advocacy priorities, I know they are out there!

[Advocacy | South Gippsland Shire Council](#)

The Budget Overall

I am pleased to say that South Gippsland is in a much healthier financial state than many Victorian councils, the long-term financial sustainability of Local Government is in some crisis, its why you won't see much action in any Local Government long term financial plans including ours. We are sustainable and in the black, not dripping in wealth but ok.

I pay silly high rates so where does all the money go?

It's a numbers game, it's what makes us us. We have 28 towns, 300km of coastline, 1400km of gravel and 800km of sealed roads to look after, council does township roads, bins, playgrounds, car parks and is responsible for well over 300 assets in a hotch potch of Crown and Council Committees Of Management. We do a lot across a massive expanse of land. We do well in grants though so the Council operational budget isn't the only avenue.

Funding inequity from town to town

Absolutely there has been structural inequity in spending across the shire due to the historical way asset ownership and management has come together through various councils and mergers, its not malicious but it is real. Some Rec Reserves have Council as a Committee of Management and we are obligated to keep the assets and infrastructure up to standard, some do not. We are on to it.

Managing risk through the Coastal Strategy

In order to have a shift in funding focus toward coastal communities within a limited budget with lots of carry forwards we needed a detailed policy and strategy justification, and this is where the coastal strategy comes in.

If you haven't seen it yet here is the link [Coastal Strategy | South Gippsland Shire Council](#)

Our Coastal Strategy won a Planning Institute of Australia national award for Climate Change and Community resilience, we did it in house on a small budget, using local knowledge and not shying away from the unpopular conversations about poor planning decisions from the 60s creating an unsustainable future if left untouched.

Previous attempts at a Coastal Strategy have assumed residential growth is always good and increasing the part time rate payer base to supplement the whole of shire income a smart move... our strategy acknowledges the state of much of our ageing infrastructure as poor, it acknowledges the increasing load on emergency services and increasing risk liability of planning in dynamic coastal environments.

We already have a number of issues with ground water coming up through pit drains now, with access roads due to be cut off more regularly, concerns around erosion, beach access difficulties increasing and all sorts of roadside drainage issues that are only going to get worse.

Already this year we've had the Welshpool floods, multiple landslips and the decimation of poor old Mirboo North. 60% of council staff were diverted to this event for some time, we are also still tallying the costs to council not covered by insurance due to our management of the rail trail on Crown land and believe me they are huge.

To not build in a key assumption that frequent random severe weather events are here to stay is in my personal opinion foolhardy, from a professional opinion it would be actively going against councils statutory, financial and risk

liability obligations. Our objective is to create a planning scheme that deals with the dynamic nature of coastal environments appropriately. It's not scary, it's just applying common sense now to an out-of-date idea.

Adaptation Planning

I know I bandy that word around a lot so to clarify our and DEECA's approach to adaptation planning is that it:

- will vary from site to site within the region
- is tailored to the needs of local communities
- considers the relative impacts of coastal hazards
- seeks to safeguard the community values (social, cultural, environmental, and economic) and character of the landscape.

Funding

Our coastal strategy is a vehicle for adaptation planning and I'm pleased to say that since releasing it we've attracted the following funding and work:

- Council is working with DEECA and the Department of Transport and Planning (DTP) on a project to identify planning controls that can implement the South Gippsland Coastal Strategy's key recommendations. The project has \$20,000 grant funding from DEECA and is on schedule for completion mid-year.
 - Using the recommendations of the Coastal Strategy, Council has been successful in securing a \$200,000 grant from DEECA to prepare the Waratah Bay Coastal Hazard Assessment. The assessment will cover more than just the bay but the area from Cape Liptrap to Shallow Inlet and investigate the impacts of rising sea levels on the coastal townships and other assets in the area.
 - Coastal hazard assessments funded by DEECA are currently being prepared for Wilsons Promontory and the area from Cape Liptrap to Cape Patterson. The Waratah Bay Assessment will fill the gap area and provide a continuous assessment of South Gippsland coastline for all of the area west of the Prom. This work is just about to commence and will predominantly occur in the 2024/2025 budget year.
 - Council is currently in the process of engaging consultants to start the Venus Bay Saltmarsh Project. It received \$80,000 by DEECA as a partner to scope the flood mitigation, carbon and biodiversity credit potential of the project known as "Common Ground", one dear to my heart 😊 This is imminent, but will go into 2024/2025.

Given most councils are still scratching around trying to find money to get to the starting gate on Coastal Hazard mapping we are in an amazing position working with DEECA. I truly believe because we were left behind we are ahead and in a great position to be leaders in Coastal Adaptation and community resilience.

State and Federal action on Coastal challenges

South Gippsland recently worked with Mornington and Bass Coast on convening the inaugural Victorian Coastal Round table on the 20th of March attended by 20 Victorian coastal councils, the department of planning and transport, DEECA, CSIRO, the Insurance Council of Australia and many other valuable voices.

From this the attending councils are putting together an ask for the appointment of a Federal Minister for Coasts and a National Coastal Adaptation Strategy. The formal communique will be presented at the National General Assembly of Local Government in Canberra in June.

South Gippsland have also put together a couple of motions to take to the to the next meeting of State Council on May 17:

1. *That the Municipal Association of Victoria call on the Victorian Government to:*
 - *Fund and complete updated coastal hazard mapping across Victoria by 2025.*
 - *Implement hazard mapping data into all affected Victorian Planning Schemes*
 - *Fund the rollout of consultation with affected communities to raise awareness of known coastal hazard risks and aide adaptation measures.*
2. *That basic telecommunications to be immediately reclassified as an essential service and that urgent regulatory changes are introduced to ensure providers, responsible for the maintenance and delivery of infrastructure and services, increase back up power systems to all existing and future phone towers from 18 to 72 hours in line with the state-wide emergency preparedness program, "The First 72 Hours".*

I firmly believe that South Gippsland is ahead of the game because it's been left behind in development, we still have wild places and incredibly fertile agricultural land. We are in a position to lead and make common sense planning decisions for the future of our magnificent coastline, decisions that increase community resilience in perpetuity.

Hurrah! Cheers Sarah G 😊

COASTCARE VICTORIA FORUM

THE VIEWS, PORT MELBOURNE AND ONLINE

WEDNESDAY MAY 22 2024




Bookings are now open for the Coastcare Victoria Forum on Wednesday 22 May 2024!

The biennial event offers volunteer groups and networks involved with Coastcare Victoria a chance to build their knowledge and network with like-minded people who are passionate about our coasts.

It will be held in Melbourne at The Views, Port Melbourne. A virtual format of the forum will also be available for those who can't make it in person.

The 2024 forum is particularly special, as we'll be celebrating 30 years of Coastcare Victoria.

This achievement has been made possible thanks to the thousands of environmental volunteers sharing their time, passion and expertise to preserve and protect our marine and coastal environments.

Tickets are free but limited - register to attend here: [Coastcare Victoria Forum on Eventbrite](#)



South Gippsland Shire Council News

2025 Kindergarten Registrations Open Soon

Registrations for three- and four-year-old kindergarten in 2025 open on 1 May.

To register, simply head to Council's website, complete the online registration form and nominate your top three kindergarten preferences.

To ensure an easy and fair process for all parents, Council operates the central registration system on behalf of all participating kindergartens across South Gippsland.

Kindergarten is a unique play-based learning environment that promotes learning and development

through experimentation, trial and error, watching, listening and participating. It encourages confidence as well as independence, all while supporting cognitive development in early childhood. Don't let your child miss out on the vital experience kindergarten has to offer.

To be included in first-round offers, registrations must be received by 30 June 2024.

To find out more, or to register, please visit: www.southgippsland.vic.gov.au/kinder

Budget Feedback



The proposed 2024/25 Budget and Long Term Financial Plan are now available for community feedback.

There are a number of ways to provide your feedback including:

- Online Survey.
- Written Submission.
- Facebook Q&A to be held on Wednesday 1 May from 5.30pm to 6.30pm.

To have your say, please visit: yoursay.southgippsland.vic.gov.au

SOUTH GIPPSLAND JOBS EXPO

Thursday 2 May 2024.

9.30am to 2.30pm.

Leongatha Memorial Hall - 6-8 McCartin Street,
Leongatha

Are you looking for work or seeking a career change?

Don't miss the South Gippsland Jobs Expo happening Thursday 2 May at Leongatha Memorial Hall from 9:30am to 2:30pm. With over 100 job opportunities available on our jobs board and 36 employers attending, this Expo is your chance to explore exciting careers paths right here in South Gippsland.



Are you looking for staff?

The Jobs Expo is also a great way for businesses to connect with people seeking ongoing employment, apprenticeships, traineeships, casual/part-time jobs, gap year and holiday work. If you have vacancies that you're looking to fill, please add them to the jobs board or register to attend the Expo!

Are you a business owner, educator or government representative?

Join us for a free business breakfast before the opening of the Jobs Expo, focused on exploring collaborative opportunities with the Local Learning and Employment Networks (LLEN). This event offers valuable insights into how we can work together to support learning and employment initiatives in our community.

WHAT'S IT ALL ABOUT?

Be informed of your employment and career options no matter what stage of the employment journey you are at. This is a **FREE event** with stallholders across a wide variety of industries. You will have the opportunity to chat with local businesses that are currently recruiting. There will be on-the-day interviews, so bring along your current resume and dress to impress!

This event is for everyone, whether you are looking for a job, a career change or training opportunities.

If you need assistance with writing your resume or cover letter, we have industry professionals ready to help on the day with laptops and a printer.

Exhibitors will include representatives from:

- Hospitality.
- Manufacturing.
- Logistics and Transport.
- Trades.
- Health.
- Defence Force.
- Emergency Services.
- Professional Services including legal, accounting, property valuers and real estate agents.
- Local and State Government.
- Agriculture.
- Digital Marketing.

On the day, information will be available on what TAFE and University courses are on offer, as well as representatives from regional employment networks.

3G Closure



Australia's 3G networks are closing down. It is important that Australians know if they will be impacted, and have time to upgrade their phones and other devices before they are closed. If you receive notice from your service provider to upgrade your device, don't put off taking action.

The mobile network in South Gippsland is operated by either Telstra or Optus, meaning irrespective of your provider, 3G won't operate after the closure dates.

Telstra will close its network on 30 June 2024. [Read more here.](#)

Optus 3G network will be shut down from September 2024. [Read more here.](#)

Positive Ageing Series

Positive Ageing Series: Healthy Feet

2-3pm Tuesday May 14th.

Come along to the Tarwin Lower Community Health Centre to hear from a podiatrist about how to keep your feet happy and healthy. This is a free on-line presentation with questions and answers at the end. Tea, coffee and biscuits provided.



Positive Ageing Series: The Key Principles of Healthy Ageing with Dr Desmond Graham

1-2pm Tuesday May 21st

Come along to the Tarwin Lower Community Health Centre for this free on-line presentation from the very engaging Dr Desmond Graham. Tea, coffee and biscuits provided.

Positive Ageing Series: Brain Health As We Age

1-2pm Tuesday May 28th

Come along to the Tarwin Lower Community Health Centre to hear a fantastic free on-line presentation by Dr Emily Rosenich on Brain Health - Maintaining Cognitive and Functional Independence.

Tea, coffee and biscuits provided.

ACHIEVE YOUR DREAMS WITH FREE CCG COURSES



Follow your dream without the financial burden.

Enrol today with Free-CCG courses.

- Free-tuition fee courses
- Balance your studies with other commitments
- Flexibility to start your course any time

WHY STUDY AT CCG?

- Smaller class sizes
- One-on-one interactions with the trainers
- Gain practical and real-world experience



ARE YOU READY TO TAKE THE NEXT STEP TOWARDS YOUR DREAM CAREER?

Let us empower you to shape your future on your terms. Explore our tuition fee-free courses:

- Disability
- Early Childhood Education and Care
- Individual Support (Aged Care stream)
- Individual Support (Disability stream)
- Salon Assistance
- Horticulture



Enrolments welcome throughout the year

Contact us for more information:

(03) 5622 6000
 info@ccg.asn.au
 www.ccg.asn.au



CCG
 Community
 College
 Gippsland



Volunteer with us - it's fun!

Do you have a few hours to spare? We are always looking for volunteers to help out at the community centre...do you have any particular skills you can contribute? Or perhaps you have a bit of time to spend helping with filing in the office or sorting donations for the Recycling enterprise?

Every bit counts and every bit is appreciated. We could not function without our fabulous team of volunteers.

So why not come and join in!

Situated at 27 Canterbury Road, Venus Bay.

Phone: 5663 7499, Send mail to Post Office Box 786, Venus Bay 3956

Email: info@vbcc.org.au Website: www.vbcc.org.au

Opening hours reflect the season - please check our website or Facebook for details

or call Alyson 0416 242 331

Venus Bay Community Centre is supported by:

Department of Families, Fairness and Housing, the Commonwealth Government, & South Gippsland Shire Council.

Our website is www.vbcc.org.au

Find current and back issues of Matter Of Fact on our website. Please contact us if you wish to be on our email distribution list.

