

August 2024 Vol 8 Issue 15

MATTER OF FACT

Providing information for Venus Bay, Tarwin Lower
and Walkerville district



A free community newsletter published by

**VENUS BAY
COMMUNITY CENTRE**

We acknowledge the Traditional Owners of Country throughout Australia and recognise their continuing connection to land, waters and culture.

We pay our respects to their Elders past, present and emerging.



Mycelia

BOOK NOW to get free energy advice for YOUR home this August!

Speed Date an Energy Expert

On Sunday, 25 August from 9.30am-4pm, everyone's invited to a one-of-a-kind community energy event at the Tarwin Lower Community Hall!

Have you been thinking about solar, batteries or heat pumps and have no idea where to start? Unsure about rebates, or getting conflicting advice from private companies? The reality is, there is no 'one-size-fits-all' solution here.

Join us and **Speed Date an Energy Expert**, and we anticipate that you'll fall in love with the energy and cost savings available to you when you get the right advice, by trusted, local experts, tailored to your specific home and energy use needs.

Bring your questions, energy bill, and photos of your home. Book a 30-minute session with a local solar and battery experts and heat pump solar hot water manufacturers.

Drop-in to talk to the Mycelia Energy Collective about solar and battery bulk buys on offer, low-cost energy deal and learn about their Energy Efficient Homes Program.

Swing in for a cuppa to talk to Venus Bay & Tarwin Lower Community Energy representatives about the next steps in our Community Energy Action Plan!

And be sure to bring the kids for some energy art in our kids' corner. We want the next generation sharing in this conversation!

Whatever you do, be sure to pop the date in your calendar and make sure you come by! We are putting the 'COMMUNITY' in community energy, and we want to make sure everyone benefits from getting smarter about energy.

Email info@mycelia.org.au to book your spot!

Venus Bay and Tarwin Lower

**SPEED DATE
AN ENERGY EXPERT**

Sun, 25 Aug, 9.30-4
Tarwin Lower Hall

The Earthworker Cooperative

MYCELIA ENERGY COLLECTIVE

SUNSCAPE SOLAR

EARTHWORKER ENERGY MANUFACTURING COOPERATIVE



Mycelia

Join the Mycelia Energy Collective

In last month's Matter of Fact we talked about the new partnership between the Venus Bay Community Centre and local charity Mycelia Renewables.

The Mycelia Energy Collective is a group of households and businesses sharing energy and knowledge, supporting a fair transition to renewable energy. It's free to sign up and anyone in Victoria can join!

The Collective does five things:

1. Offers a low-cost energy deal to households and businesses.
 - a. NO MEMBERSHIP FEES! Anyone can join, and the rates are really good! You can check them out [here](#), [get a quote, or sign up in 5 minutes](#). It's very easy and they'll move your old bill over for you.
2. One dollar a week from each person goes into a community-benefit fund to use for our local energy goals.
3. Knowledge-sharing and community events to share information and ideas. (Like, **Speed Date an Energy Expert!**)
4. Opportunities for more community-owned renewable energy installations, including bulk buys for households.
5. Mycelia's Energy Efficiency Homes Program, which includes Household Energy Efficiency Assessments and Upgrades and Group Learning Courses.

We recommend you have a look at the Mycelia Energy Collective's retail energy offer. Aside from competitive peak and off-peak rates, a percentage of each electricity bill is allocated to a community benefit sharing fund we can use to support our Community Energy Plan for Venus Bay and Tarwin Lower!

- [Check out the Mycelia Energy Collective retail offer](#)
- Follow Mycelia Renewables Ltd on [Facebook](#) and [Instagram](#)
- [Book your spot - Speed Date an Energy Expert - 25 August](#)

And if you have any questions about the Mycelia Energy Collective, feel free to contact info@mycelia.org.au anytime!





VENUS BAY ANGLING CLUB will hold the August Fishing Competition starting at 12 noon Friday 16th August and finishing at 3.00 pm sharp Sunday 18th August.

There will be a weigh in each day at the club between 4-6pm Friday, 4-6 pm Saturday, and the final weigh in between 2.30-3.00 p.m.

Sunday when the winners will be announced. 1st Prize for financial members is a \$50.00 voucher from a local business. Our BBQ will be held on Saturday night, meat provided, and members and visitors are asked to bring along a hot dish/salad/dessert to share. For non members there is a \$5.00 entry fee for the competition which covers you for the BBQ Saturday night as well. We will have our raffle on Saturday night (with some great prizes) as well as the members draw which has jackpotted to \$160.00. Come along and join in the fun. Winter months in Venus Bay are great for surf fishing - if you're keen to brave the cold - some good salmon have been caught lately. If you're new to fishing and would like some tips or would like to borrow a fishing rod, come down to the club on a Friday night between 4-6 and we can help you out.



Men's Social

COOKING

FIRST MONDAY OF THE MONTH.

AUGUST 5TH

5PM START

PLEASE RSVP TO 0404 773 044 BY 2ND AUGUST FOR NUMBERS



UKULELE GROUP

EVERY THURSDAY 7.00 - 8.30

\$5 PER WEEK



GOLD COIN DONATION APPRECIATED

Knit, Crochet or Stitch

BYO PROJECT

Share some time with like minded people

21ST OF AUGUST 5.00 - 6.30ISH
VENUS BAY COMMUNITY CENTRE
27 CANTERBURY ROAD



Monthly activity - 3rd Wednesday of the month

Freeform writing group

Dedicated writing time & random writing exercises to inspire

August 13th
3.30 - 5.00

Gold coin appreciated



1ST WEDNESDAY OF THE MONTH

MONTHLY EVENT

Let's Laugh & Play with Friends

GAME NIGHT

WEDNESDAY AUGUST 7th

AT VENUS BAY COMMUNITY CENTRE
05:00 - 6:30 PM

CARD & BOARD GAMES

Games will be available but feel free to bring your own.

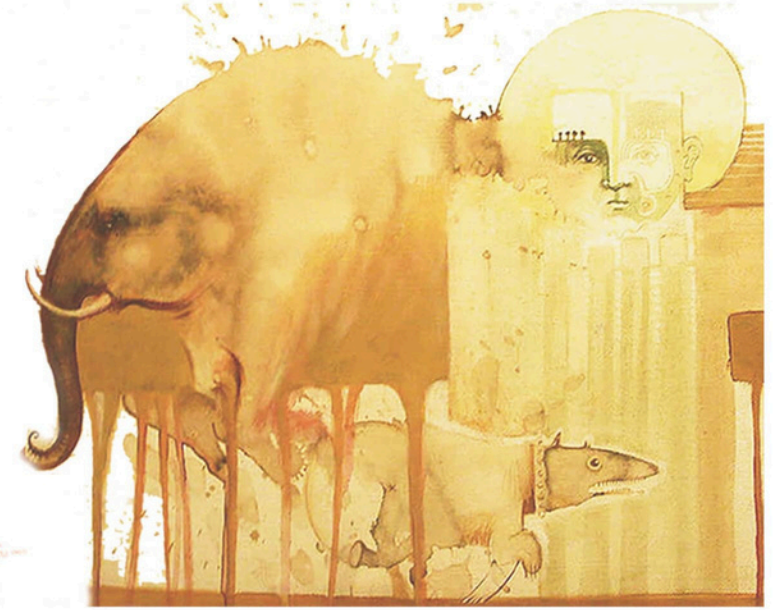
GOLD COIN DONATION APPRECIATED



WATERCOLOUR SESSIONS

Venus Bay

Tutored by Gonzalo Varela



When? Every Monday from 15:00 Hs to 18:00 Hs.

Where? Venus Bay Community Centre 27 Canterbury Road, Venus Bay

How much does it cost? \$40.00 per session

Can I bring refreshments? Yes, each session has a 20 min. break where we talk about the work and enjoy BYO refreshments.

Join At Any Time

Personalized program. We will enter the world of watercolor covering topics such as portrait, landscape, color, depth, composition, balance, tone.

You can bring your own materials or pay an extra \$10 for brushes, paint and paper.

Workshop suitable for adults, professionals and beginners.

Kids welcome to form a new group at another time, please contact me.

Something about me

I am an Argentine artist with a degree in fine arts from the University of Bellas Artes of La Plata, Buenos Aires. I live in Fish Creek.

I have 40 years of experience and my works belong to public and private collections in Argentina, Spain, USA, Germany and Australia.

I paint on canvas and murals, I work with various techniques (watercolor, acrylic and oil).

Don't miss this wonderful opportunity to learn, create, and enhance your artistic skills.



Important: Contact me via message or email to confirm your place before it is taken.

Email: untipocreativo@hotmail.com

Phone: 0456961010 Thank you



The turbines were operating at almost maximum capacity when members of the Tarwin Landcare Group (TLG) visited the Bald Hills Wind Farm (BHWF) last week.

First stop of the tour was on the top of a hill near one of the turbines where BHWF Assets Manager Glenn Furlong described how wind energy is generated and fed into the grid. They were joined by farmer Lindsay Marriott whose 388 ha property hosts 12 of the 52 turbines that make up the BHWF. Lindsay was able to share his 'lived

experience' of running a beef and sheep farm in conjunction with the turbines which provide an additional income stream for his business.

Lindsay described how he reconfigured his internal fencing to complement the BHWF turbine and road layout and created pockets of revegetation rather than linear shelter belts. This unconventional subdivision (there are no rectangular paddocks) has significantly increased productivity and has the additional benefit of reducing his bushfire risk.

The tour finished at the operations centre where Glenn was able to provide more information about the technology and maintenance required to generate wind energy. The group learned that the BHWF contributes around 380,000 megawatt hours of electricity per year, sufficient to power 62,000 homes. As a long term average, this renewable electricity avoids up to 335,000 tonnes of CO2 emissions and equates to taking 77,000 cars off the road.

TLG benefited from the presence of one of its members, an electrical engineer, with extensive knowledge of renewable energy. He explained in simple terms the issues clouding the renewables debate, particularly the problems associated with an aged grid network based on the location of coal deposits.

TLG was also fortunate to have the use of Sunny, the Venus Bay Community Centre's electric bus, for the tour which kept participants out of the biting cold.

TLG thanks BHWF for hosting the tour, and also for its support through the Bald Hills Community Fund grants program. This year, TLG has been able to purchase seedlings, planting equipment and mugs that will all be valuable for future events and projects.

For more information about TLG, contact tarwin@group.sgln.net.au.

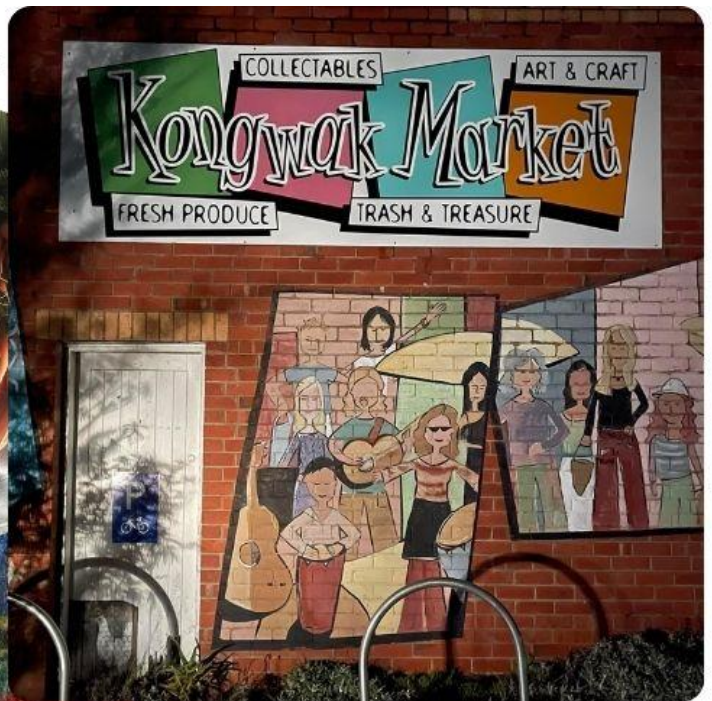


Photos:

Bush, agriculture and energy production were on show when Tarwin Landcare Group visited the Bald Hills Wind Farm (above left)

Members of the Tarwin Landcare Group toured the Bald Hills Wind Farm in Sunny the e-bus (above right)

<https://events.humanitix.com/kongwak-market>

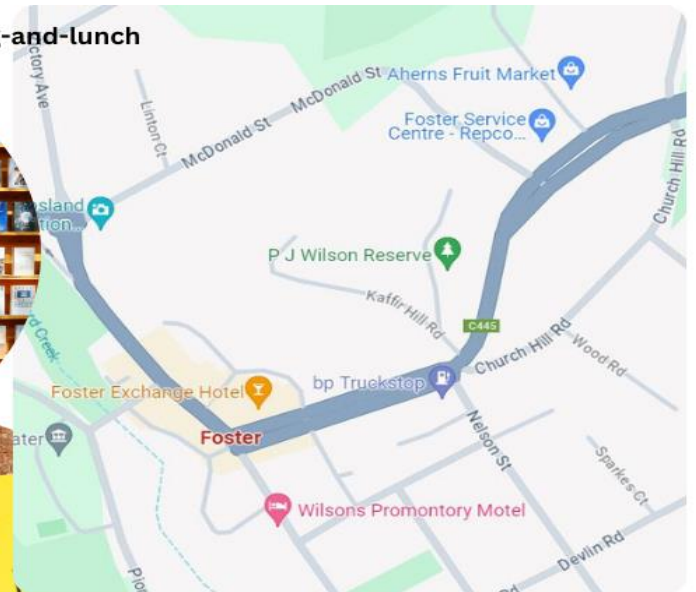


August 11th leaving the Community Centre at 10.00 & returning at 1.00

Book a bus seat via Humanitix \$10.00

Powered by community... for community.

<https://events.humanitix.com/foster-shopping-and-lunch>



August 22nd leaving the Community Centre at 10.00 & returning at 2.00

Book a bus seat via Humanitix \$10.00

Powered by community... for community.

85 YEARS OF RED CROSS IN TARWIN LOWER!!



**Australian
Red Cross**

The latest meeting of the Tarwin Lower Red Cross on Tuesday 2nd July saw us celebrating the combined anniversaries of Christmas in July, our 85th birthday and also the 110th birthday of Red Cross in Australia. A delicious cake was baked and decorated by Fiona Dixon for the occasion.

Red Cross/Red Crescent is a worldwide organization – neutral, impartial and independent with the aim to prevent and relieve human suffering. Many of its programs rely on the work and contribution of volunteers. It came into formation after the Battle of Solferino (Northern Italy) when the suffering of wounded soldiers raised the compassion of Henry Dunant. The International Red Cross and Red Crescent Movement, was born of a desire to bring assistance without discrimination to wounded on the battlefield. 1863 saw the beginnings of the International Red Cross with a meeting in Geneva, Switzerland;

the red cross on a white background pays homage to the Swiss origins whose flag is a white cross on a red background.



The Australian branch of the British Red Cross society was formed at the outbreak of World War 1 in 1914.

Australian Red Cross have a wide variety of programs which include first aid training, blood collection, emergency services in disasters, assisting migrants and building resilient communities.

Locally, The Tarwin Lower branch was formed on 15th November 1939 when World War 2 broke out; the first president was Mrs. A. M. Black., however many early records were destroyed in a fire. Significant dates have been recognised over the years with trees planted in the primary school grounds – Flowering gums first 1959 in recognition of 100 years of Red Cross and 1989 to recognise 75 years of Australian Red Cross and a gum tree was planted at Fishers Park in 2014 commemorating 100 years of Australian Red Cross.

Over the past 85 years inclusive local community activities have seen Tarwin Lower Red Cross hold First aid and Nursing courses; start four Emergency catering teams in 1982 to attend fire, accidents & floods etc. Other work has included a mobile library service to patients in Woorayl hospital, Leongatha, by Mrs. Norma

Leeming who visited twice a week for 18 years. Nancy McMicking who organized a Blood Bank at Leongatha; travelling three times a week for 5 years.

In 2004 a Telecross network was convened by Terri Morris.

In 2007, The Maritime Safety Authority presented a Certificate of Appreciation for catering services to Victoria Police looking for a small plane lost at sea in Venus Bay. Poor visibility was considered by the ASTB to be the cause of the crash resulting in the deaths of the four people on board.

A Junior Red Cross has been formed at various times in the primary school. A major project was raising money for 'Water for life' for a water well in Rwanda, with a plaque recognizing the work of Tarwin Lower.

Significant community dates in the calendar are Australia Day; ANZAC day; Red Cross Calling in March, regional meetings (Zone 8 to match the CFA) and other branch activities.

Fundraising includes collecting used postage stamps and postcards to be sent to Headquarters; also by holding raffles, fashion parades, secondhand stalls and a trade table.

Meetings are held on the first Tuesday of the month (next meeting 6th August) at the Tarwin Lower Medical Centre at 1.30pm the meeting concludes with a social afternoon tea. All are welcome.

Did you know that if you text

0477 13 11 14

between 6pm – midnight (AEST),
when you are feeling really depressed,
suicidal or in need of support, a Lifeline
crisis supporter will text with you?

Many people don't like talking on the
phone and would be more
comfortable texting.

Lifeline Text is a service
run by Lifeline.

 Lifeline

Dying to talk

Join us for tea, coffee, scones and conversation.

As part of the Dying to Know Day campaign to normalise discussion about end of life. We will all face this at some point, whether it be assisting others with decisions, planning a funeral or ensuring your will is up to date.

Topics discussed will be decided by the group.

**Thursday 8th August
2.00 pm to 3.00 pm**



NEW AT THE CENTRE THIS MONTH

A promotional poster for 'Travel Tales' set against a background of a beach at dusk with palm trees and people. The title 'Travel Tales' is written in a white, cursive font. Below it, the text 'A NEW MONTHLY SERIES OF INFORMAL CHATS ABOUT HOLIDAY ADVENTURES BY INTREPID LOCALS' is written in a white, sans-serif font. In the top left, there is a white airplane icon and a circular pattern of white dots. The text 'ALL WELCOME' is written in white on the left. On the right, 'LIGHT SUPPER PROVIDED' is written in white. Two circular inset photos are shown: one of a man in a red shirt and a woman in a pink headscarf, and another of two women standing together. At the bottom, an orange banner contains the date and time 'AUGUST 26TH 7.00 - 8.30' and a paragraph of text. A white wavy line icon is on the right side of the orange banner. A white dashed arrow points towards the bottom right corner of the orange banner. At the very bottom, the text 'Gold coin donation appreciated' is written in white.

Travel Tales
A NEW MONTHLY SERIES OF INFORMAL CHATS ABOUT HOLIDAY ADVENTURES BY INTREPID LOCALS

ALL WELCOME

LIGHT SUPPER PROVIDED

**AUGUST 26TH
7.00 - 8.30**

We are starting this vicarious journeying with Alyson Skinner who will share her recent experiences of travel through Morocco.

Gold coin donation appreciated

VENUS BAY COMMUNITY CENTRE

August at a Glance

1	7.00 - 8.30	Ukulele group
5	3.00 - 6.00 5.00 - 6.30	Watercolour class Men's Cooking
7	12.00 - 1.00 5.00 - 6.30	Free community lunch Board games and cards
8	10.30 - 11.30 2.00 - 3.00 7.00 - 8.30	NDIS Education session Dying to talk Ukulele group
11	10.00 - 1.00	Kongwak bus trip
12	3.00 - 6.00	Watercolour class
13	3.30 - 5.00 5.00 - 6.30	Freeform writing group Book Club
14	12.00 - 1.00	Free community lunch
15	7.00 - 8.30	Ukulele group
19	3.00 - 6.00	Watercolour class
21	12.00 - 1.00 5.00 - 6.30	Free Community lunch Knitting, crocheting & stitching
22	10.00 - 2.00 7.00 - 8.30	Foster shopping & lunch bus trip Ukulele group
25	9.30 - 5.00	Speed date an energy expert
26	3.00 - 6.00 7.00 - 8.30	Watercolour class Travel tales - Morocco - Alyson Skinner
28	12.00 - 1.00	Free community lunch
29	7.00 - 8.30	Ukulele group
Coming in September		School holidays Men's social cooking -2nd Travel tales - 23rd

Tarwin Lower Union Church



Regular services:

Saturday 5.30 p.m. **Catholic**
Liturgy/Communion on the Saturday before the 1st, 2nd, 4th and 5th Sunday of the month

Saturday 4 p.m.
Mass before the 3rd Sunday

Sunday 10.30 a.m. **Anglican/Uniting**

Our mission is to be a welcoming, sharing Christian community Coming up:

- * Women's discussion group: Thursday 8th and 22nd August at 10.30 a.m.
Join us as we read and discuss the book 'The art of happiness: a handbook for living' by the Dalai Lama
- * KYB (Bible study): Friday 9th and 23rd August at 1.30 p.m.
Join us as we read and study 1st and 2nd Thessalonians

Tarwin Lower Community Health Centre

Monday to Friday 10am-2pm. 19 Walkerville Rd Tarwin Lower. Phone 03 5667 5680.

Volunteering

The Community Health Centre runs on the dedication of local volunteers and the support of Gippsland Health Service and South Gippsland Shire Council. Volunteering is a great way to get involved in your community and meet new people. Please get in contact (03 5667 5680) if you are to help in any way (we are particularly on the look-out for reception volunteers and a new treasurer (as our valued current treasurer will be stepping down from the role later this year). The centre also has space and availability if you have an idea for a social and/or health related new club, group or activity.

Friday Friendship group

Are you registered with My Aged Care and looking for social activities? Friday Friendship group gets together for picnics, music, entertainment, games and more! Please contact Michelle at Gippsland Southern Health on 03 5654 2791.

Nurse Practitioner Deb Garvey

Every Wednesday from 8am. Please book at the Health Centre or call and leave a message on 03 5667 5680.

Health Centre Gardening Bee (First Saturday of each month) Saturday 3rd August. 10am-11.30am. Please bring gloves. Everyone is welcome.

Pilates on Tuesdays mornings. Improve your strength and flexibility.

Classes (\$15).

For class times and to book, please call Jeanette on 0409 252 863.

Red Cross Tuesday 6th August 1.30pm. Contact Glenda Arbuthnot (president) on 03 5663 5244.

VOLUNTEERS REQUIRED

Sunday 03 November 2024 (Cup weekend)

We are looking for volunteers to help on the day for various positions and times

Food Stalls/Market Stalls

Pedestrian entrance

Cleaning & Rubbish Female toilets

Male toilets

Customer car park attendants

Administration Office

Vehicle Entrance

Cleaning & Rubbish

Marshalling of Show Cars

7.00 am – 9.30 am

12.00 pm – 2.30 pm

9.30 am – 12.00 pm

2.30 pm – 5.00 pm

Please advise what area you can assist in and time that best suits you.

We will do our best to have you in your preferred area.

Contact: Lorraine lorrainejkennedy@hotmail.com or Mel madmel_74@hotmail.com

Thank you in advance for volunteering

Your time & efforts are greatly appreciated.

Festival Committee



“Dragging us into the 21st Century”

The Venus Bay Tarwin Lower Men’s Shed (The Shed) is delighted to have received a Grant from South Gippsland Shire Council (SGSC) Community Grants program 2023/4 to replace its ageing computer system.

The Shed has had a significant growth in membership over the last 2 years (currently at 54) which has put additional demand on among other requirements, administration. Our small aged notebook did not have sufficient capacity nor updated applications to cope with current requirements. Of particular note has been the large amount of documentation including plans, for the recent Grant application for a Shed extension – which has been won; and will require a mountain of computing for the project management phase over the next 18 months.

The new system will make it easier to create booking and travel schedules for the Shed bus; create flyers for its range of wood goods for sale; create maps and flyers for the Tarwin District Community Lifestyle & Auto Festival, a joint venture in concert with the Tarwin District Auto and Machinery Club.

Increasingly our newer Shed members are coming into retirement from occupations where they have used computers in their daily work and are requiring equivalence of modernity from our Shed equipment.

For those without updated hardware and software there is a desire to undertake training in newer technology which demanded an updated environment to enable such training to be done.





NDIS EDUCATION SESSION

Provided by Interchange Gippsland

ARE YOU A CARER OF SOMEONE WITH A DISABILITY?



!! STRUGGLING TO UNDERSTAND THE NDIS? YOU ARE NOT ALONE!

DATE: Thursday 8th August 2024

TIME: 10:30am to 11:30am

LOCATION: Venus Bay Community Centre,
27 Canterbury Road, Venus Bay VIC 3956

COST: FREE

Limited spaces available!

To register, contact us via phone or email!

CONTACT DETAILS

1300 736 765

admin@icg.asn.au



Hello everyone!

Renovation update – A happy week! Painting is complete and the final lighting installation will follow soon. Some finishing touches and we will plan a morning tea to thank all our contractors and supporters. These kinds of projects don't happen without grants, community support and many volunteer hours behind the scenes and want to thank you!



Tarwin Lower Film Society will screen *The Lady in the Van*

on Friday 16 August` at 7:30pm (Rated PG Duration 1hr 44m. British Comedy/Drama)

DIRECTOR: Nicholas Hytner CAST: Maggie Smith, Alex Jennings, Jim Broadbent

This movie tells the true story of Alan Bennett's (Alex Jennings') strained friendship with Miss Mary Shepherd (Dame Maggie Smith), an eccentric homeless woman who Bennett befriended in the 1970s before allowing her temporarily to park her Bedford van in the driveway of his Camden house. She stayed there for fifteen years. As the story develops, Bennett learns that Miss Shepherd is really Margaret Fairchild (died 1989), a former gifted pupil of pianist Alfred Cortot. She had played Chopin in a promenade concert, tried to become a nun, was committed to an institution by her brother, escaped, had an accident when her van was hit by a motorcyclist for which she believed herself to blame, and thereafter lived in fear of arrest.

www.trybooking.com BYO drinks and food.

The Circus is coming to town! "Casting Off" - Friday 23 August at 7:30pm

Our next professional touring gig to visit the Hall is supported by Regional Arts Victoria. Billed as an "acrobatic comedy that surprises and delights" Casting Off is a witty and poignant physical comedy. A refreshing and uplifting conversation between three generations of powerhouse circus women who hold each other up both literally and metaphorically. Tickets are now onsale for this performance here Full \$35/Conc \$25 -

<https://www.trybooking.com/CTIEG>

Also there will be a **special circus workshop** be held by the performers the day prior on Thursday 22 August @ 4:30pm. Recommended for adults and young people 12 years and over. Get your tickets for this amazing opportunity here just \$10.00 pp - <https://www.trybooking.com/CTJCO>



CASTING OFF
A GOOD CATCH CIRCUS
Acrobats meet stand-up comedy

TARWIN LOWER HALL
27 River Dr Tarwin Lower

Circus Workshop Thurs 22/08/24 4.30pm
\$10 12 years old & over

Performance Fri 23/08/24 7.30pm
\$35/\$25 conc.

Tickets <https://www.trybooking.com/CTIEG>

2024 Market Dates

- Twilight Market – AFL Grand Final Friday 27 September 2 – 6pm
- Melbourne Cup long weekend - Monday 4 November – 8am – 1pm

2025 Market Dates

- Monday 27 January (Australia Day)
- Monday 10 March (Labour Day)
- Monday 21 April (Easter Monday)
- Monday 9 June (King's Bday)
- Friday 26 September (Twilight AFL GF Eve)
- Monday 3 November (Melbourne Cup long weekend)

Marg de Wolff

Secretary, Tarwin Lower Mechanics Institute Committee Inc

ART CUBE RESIDENCY TARWIN LOWER MEMORIAL HALL. JUNE - JULY 2024

This winter I was fortunate enough to be one of the seven artists invited to take up a 4-week arts residency hosted by the Tarwin Lower Memorial Hall as part of the South Gippsland Shire Art Cube initiative.

Each artist was encouraged to use the time and space to honour ones' art practise – in any way imagined. I chose to unpack thirty plus years of archives accumulated from working as an artist with dance and film.

Rewind back to University and the study of dancemaking and filmmaking. I was interested in the similarities and differences in the two crafts. Dance is ephemeral – as soon as it appears it is gone. Film is almost the opposite – it is permanent. It can be stored and replayed over and over again. However, both share the element of movement. It was my passion for movement that led to my obsession of combining dance and film together. I have created work for film, theatre and loved to use more unusual locations for the works. Locations are an integral part of my work. For example my dance film THREAD(1996) was filmed on number one beach at Venus Bay. At the time dance film in Australia was barely a whisper. So I travelled. Initially my film CHICKEN(1994) took me to New York. Living there I was enamoured and energised by the amount of activity surrounding the form. I had access to libraries of dance films and there were regular screenings of local and international works. There were also organisations specifically focused on my craft. Dance film thrived throughout the 1990's and into the new century. The momentum saw me travel to Europe, working and living in London, Paris, Amsterdam and Berlin. In 2005 I was awarded the prestigious Australia Council of the Arts Fellowship and spent two years in Canada being mentored and making films. One of my favourite and most surreal memories is filming in a Canadian forest at midnight– the location covered in snow, the temperature minus 27 degrees!

Back to winter at the ArtCube – Cube is the perfect description. Inside is tiny - four white walls and two square windows to look in and also out of. You couldn't swing a cat in there (are we still allowed to say that?) I put in a desk, and boxes and files filled with photos and memorabilia and a projector to screen my films. It was overwhelming seeing all my stuff banked up in the cube like that but strangely the contained size of the space and the closeness of the walls became like a supportive embrace. I felt safe. I unpacked and spread out. I stuck photos, drawings and parts of my film up onto the walls and the Cube's interior grew into a mural which depicted the journey I had been on. Memories of the people; the dancers; the places; the cinematographers, composers and designers, producers and young artists I had mentored and worked with. All the locations and the hauntingly beautiful buildings we had filmed and danced in. It made me think about how we never really spend time considering the process' involved in the making of a work. For most part we only get to see the finished result – the painting, the creation, the play, the film.

I spent the mornings at the Cube rediscovering the depth and integrity of each work and documenting these memories. I also experimented with projecting my short dance films onto different surfaces. At dusk I would warm up the projector and play around screening. The Cube responded and bounced images off the glass windows, onto the ceiling and the floor giving new life to old works. I toyed with the scale making them as small as possible and then trying the opposite. If you were driving by at night you might have seen my films dancing on the side of the craft building, the open door of my Cube or even the wall of the Tarwin Lower Memorial Hall.

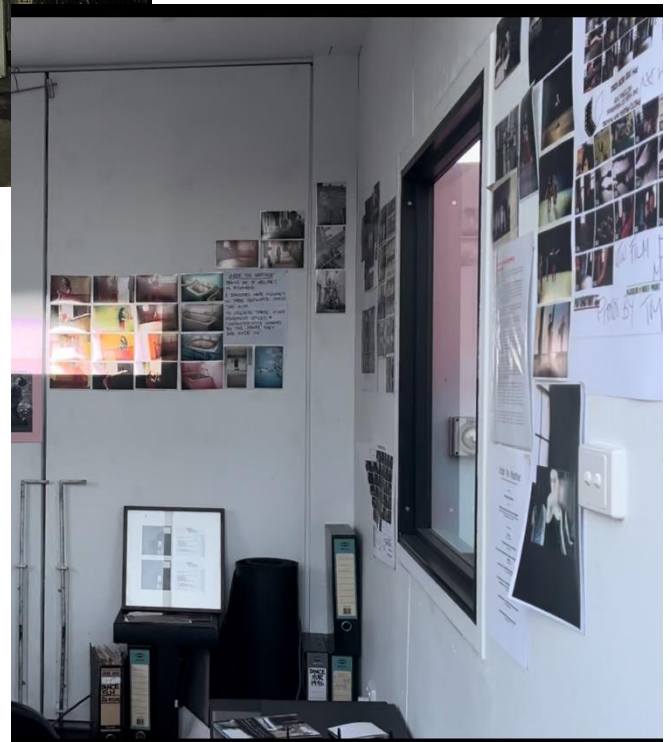
Allowing myself to time to muck around has reminded me of the significance of playing with form and ideas. Actively disrupting what is considered the normal way of doing things can lead to discovery of the new and the yet unknown.

At the end of the project the Hall initiated a three-day exhibition to celebrate the artcube artists. The success of the exhibition was the bringing together of artists and community artists. It was a great time of sharing and supporting.

For me it has been an amazingly energising time. Having this period of time dedicated to investigation, pondering and creative thinking has led me to a new take off point from which to develop ideas.

The whole experience was a time of feeding my creative spirit and I am excited to move forward into what the future holds.

Dr Tracie Mitchell



Venus Bay & District Community Emergency Response Team

The Committee of Management along with our dedicated First Frontline Volunteer Responders would like to thank **Bald Hills Wind Farm 2024** for the successful funds of \$1799 for their project **“Apple iPad and Training Venue Costs”**

This iPad and venue costs will assist with training for the Responders and other local Emergency Services, Organisations / Clubs. The iPad will be used with the adult and child electronic manikins.



Before photo manual CPR Manikins



Current photo electronic CPR Manikin

Remember to call '000' if you require an ambulance





MORNING CLASSES START BACK
TUESDAY AUGUST 6TH
TUESDAYS AND SUNDAYS
9:30AM-10:30AM
AT THE TREEHOUSE STUDIO VENUS BAY
BOOK NOW TO SECURE YOUR PLACE ON THE MAT
TEXT 0421300407
COMING UP
Change of Season MINI RETREAT
Aug 31 - Sept 1
for more information and booking text 0421300407

The Gentle Art of Life and Curiosity Podcast

How a residency in the Art Cubes at Tarwin Lower was the opportunity for me to do something I had never done before but always wanted to: cold swimming and a podcast!

Written by Beck Robertson



I grew up in Tassie, so you'd think I'd be good with the cold. Nope! As someone who had school swimming lessons at the Top of the World pool in Hobart, with icy winds cutting right through you as they sped over snow speckled Kunanyi (Mount Wellington) and who played hockey in the depth of winter, so cold that when the first balls were hit the grass would clink and break like shards of glass. I reckon I've done the hard yards when it comes to playing it cool with the cold. There was a time when temperature was a secondary concern to the more important pursuit of fun! My family would have our 'summer' holidays in Scamander a small town on the east coast of Tassie with a lagoon. I was in the warty phase of childhood and I had a massive one on my left hand. I went into the lagoon with that wart, and after spending a considerable amount of time playing on the lilo in those icy waters I emerged having lost my wart to the deep. Without doubt those formative years put me off or my preferences changed with an 80's obsession with the Gold Coast that Tasmanian's seemed to have, tans and crochet bikinis, Reef Oil and burning yourself to a crisp on the one good day of summer. Whatever, I had ceased to play in the water with no thought of discomfort.

Fast forward to living in Venus Bay and interviewing some incredible people for a podcast that I had put together for the recent Tarwin Lower Art Cube residency, Paul Hastings (pictured) our resident bird photographer told me about how much he enjoyed cold swimming every morning during our interview and I made a commitment then and there to head to the beach on the Winter Solstice. I had been watching this mad group of intrepid thrill seekers from a curious distance for some time already.

My podcast, The Gentle Art of Life and Curiosity has been the most wonderful experience. As an actor, voice artist and advocate I understand the power of storytelling and I know there are so many wonderful people with their own stories to tell in our community. Everybody has a story and I was privileged to speak to 11 local people about their lives, work and wisdom. The project has been so enjoyable, and I think it has been for my guests as well, that I aim to continue the podcast into the future. The stories are a real celebration of adventure, love of environment, community, resilience, awe and wisdom. Speaking to each of my guests taught me something new about them, but also about who this community is and how proud everyone is to be a part of it. And I did take that Winter Solstice plunge and have done so again a couple of times. It felt amazing to do something I had convinced myself was not for me. Just as my podcast guests stepped out of their comfort zone to share their lives with me and you. I'm so grateful they did. If you would like to know more about sharing your story you can contact me through my Facebook Page [The Gentle Art of Life and Curiosity Podcast](#) You can find the podcast on [Spotify](#), [Apple Podcasts](#), [Acast](#) or wherever you access your podcasts. It's free to download and listen to, you don't have to pay for a subscription.

Beck Robertson is an actor, voice artist, [writer](#), advocate and massage therapist living in Venus Bay.

Cr. Gilligan's August update. Get on down to beautiful Toora to see where the Art Cubes went after their success in Tarwin Lower! I love this project so much in its reach beyond the usual suspects, our council is committed to recognizing and supporting its 28 small communities and the wealth of creative talent in every single one of them. Go cubes!



If you are a part timer or holiday house owner and care about the direction of South Gippsland make sure you get a vote in the upcoming Council elections. Council have extended the time to enroll. **NEW CUT OFF DATE is 4pm, AUGUST 7.**

The Victorian Electoral Commission (VEC) wiped the slate clean for the 2024 council elections; **if you have received postal votes in the past you won't this time** unless you are a permanent resident or have enrolled. VEC data only counts the full-time population and assumes only a tiny percentage of our part time population would want to participate in local council elections.

IT TAKES TWO MINUTES Call council on **(03) 5662 9200** or enroll online here <https://www.southgippsland.vic.gov.au/election>

Renewables Transition Work Like it or not South Gippsland is at the centre of the national energy transition story with the decommissioning of oil and gas rigs, new national grid infrastructure via Marinus Link, off and onshore wind projects, Barry Beach as the likely operations and maintenance port and more. With industry expansion comes jobs but also the pressure on our already struggling road networks, accommodation shortages and everything in between.

South Gippsland Shire have been working closely with Wellington Shire and LaTrobe and I'd recommend everyone have a read of the [Impact and readiness study](#). (attachment 2.2.1). Whilst community benefits funds are a fair way off being active I'd encourage groups to get shovel ready projects ready now. This is the opportunity part that we need to get on top of!

Coastal funding and planning advocacy At the recent Canberra ALGA conference we were busy busy busy and I did get hold of the microphone a fair bit on behalf of Coastal communities 😊

Cr. Hersey and I met with the Director of the National Emergency Management Agency and had some great frank conversations around the challenges of South Gippsland in being able to respond to and mitigate against disasters and emergencies and the need for adaptation funding.

Among other panels and discussions I contributed to a Disaster and resilience listening panel, the result of which can be found [here](#). This panel discussion led to the co-creation with JLT (Public Sector Risk Experts) on a one day forum to be held in Venus Bay in September. The day will be focused on starting the work with our communities, managing coastal risk and liability and all Victorian Coastal Council CEO's Mayors and Audit and Risk Chairs have been invited.

I was also part of Team Coast, a delegation of coastal councils from Moyne Shire, East Gippsland, Mornington and South Gippsland who met with the Federal office of Climate and Energy to discuss the need for a National Coastal Adaptation plan and a Minister for the Coast. With 50% of Australians living within 7km of the coast, it makes sense, we are an island after all.

Our coastal communities know what they need, they are already out there building their own resilience and all levels of government need to work together to supercharge them, to support volunteers and get on with preparing for the future. Getting out of a cycle of disaster response/wait until its too late mode, and toward mitigation and common sense planning is where we need to be.

Motions adopted On a more formal note, South Gippsland successfully put up two motions for federal adoption:

1. This National General Assembly calls on the Australian Government to support rural councils that are impacted by Australia's Renewable Energy transition targets, by calling on the Federal Government to provide funding, and resourcing, to support land use and infrastructure planning.
2. This National General Assembly calls on the Australian Government to seek the immediate reclassification of telecommunications to an essential service and request that urgent regulatory changes be introduced to ensure providers responsible for the maintenance and delivery of infrastructure and services, increase back up power systems to all existing and future phone towers from 18 to 72 hours in line with the state-wide emergency preparedness program, "The First 72 Hours".

That's it from me, the next newsletter will be when we are in caretaker mode so thanks for reading for the past three years! If there is anyone interested in running for council please send them my way 😊 Our coastal prom ward has expanded and we need strong representation! Thank you. Cr. Sarah Gilligan.



Tarwin Lower Primary School

- Kindness
- Cooperation
- Resilience
- Respect

Tarwin Lower
Primary School
proudly
educating
our community
for 99 years



Small School, BIG Opportunities

Our School Features:

- Small Class sizes, providing individual attention, laying strong foundations in Literacy and Numeracy
- Supportive learning environment
- Strong connections with the local and broader community
- Thursday playgroup on site
- Stephanie Alexander Kitchen Garden Program
- School Well-being dog - Graham the groodle
- Dedicated, professional teachers committed to supporting your child to succeed at school and for life
- Spacious, modern facilities with plenty of open spaces for children to play, grow and learn.

WE WELCOME ALL ENQUIRIES AND SCHOOL VISITS

34 School Road
Tarwin Lower 3956
Phone: 03 5663 5263

Email: tarwin.lower.ps@education.vic.gov.au

Website: www.tarwinlowerps.vic.edu.au



Volunteer with us - it's fun!

Do you have a few hours to spare? We are always looking for volunteers to help out at the community centre...do you have any particular skills you can contribute? Or perhaps you have a bit of time to spend helping with filing in the office or sorting donations for the Recycling enterprise?

Every bit counts and every bit is appreciated. We could not function without our fabulous team of volunteers.

So why not come and join in!

Situated at 27 Canterbury Road, Venus Bay.

Phone: 5663 7499, Send mail to Post Office Box 786, Venus Bay 3956

Email: info@vbcc.org.au Website: www.vbcc.org.au

Opening hours reflect the season - please check our website or Facebook for details

or call Alyson 0416 242 331

Venus Bay Community Centre is supported by:

Department of Families, Fairness and Housing, the Commonwealth Government, & South Gippsland Shire Council.

Our website is www.vbcc.org.au

Find current and back issues of Matter Of Fact on our website. Please contact us if you wish to be on our email distribution list.

