

October 2024 Vol 10 Issue 15

MATTER OF FACT

Providing information for Venus Bay, Tarwin Lower
and Walkerville district



A free community newsletter published by

VENUS BAY
COMMUNITY CENTRE

We acknowledge the Traditional Owners of Country throughout Australia and recognise their continuing connection to land, waters and culture.

We pay our respects to their Elders past, present and emerging.

SOUTH GIPPSLAND SHIRE COUNCIL ELECTIONS

The elections for our Council representatives will be conducted by POSTAL ELECTION.



Postal election

Voting in this election will be by post. We will post ballot packs to enrolled voters from Monday 7 October.

Follow the instructions on the ballot pack to complete your vote. Make sure you post it back before **6.00 pm** on **Friday 25 October**.

[More information about this election.](#)

We contacted the 5 candidates for our ward and invited them to provide some information.

MEET THE COASTAL PROMONTORY WARD CANDIDATES

SARAH GILLIGAN



Hello from Sarah Gilligan. Some of you know me as one of those mad Beach 5 morning swimmers, but as well as being an enthusiastic resident of beautiful Venus Bay, I've had the honour of representing you for the last three years on council along with Scott Rae and Mohya Davies. I was elected on the promise of working TOGETHER for the good of the shire and a return to democratically elected leadership and have delivered on that promise.

I've turned local need into adopted strategy and strategy into policy, advocacy, funding and planning reform with the unanimous support of all 9 councillors via our Planning Institute of Australia award winning Coastal Strategy. Emergency Management is my other passion and I've been instrumental in the creation of the hyper local Venus Bay Emergency Management Plan now part of the Municipal Emergency Management Plan, I'd like to see these rolled out for all our small towns connecting volunteer

emergency services with agency resources and with each other. I've brought our Victorian Coastal Councils together to plan for the long term, working in silos gets nothing done.

I'm an honest, diligent and committed councillor, on the audit and risk committee and MAV Emergency Management committee. I'm constantly working behind the scenes to create funding and support pathways in the public and private sector for small town energy resilience, disaster readiness, risk mitigation and natural adaptation planning. So if you'd like a councillor who works hard, advocates hard and knows how to work the system for your benefit - VOTE 1 SARAH GILLIGAN - gillyforgippy.com - your coastal councillor.

SCOTT RAE



Even a world and shire of no real stereotypes ... I would still be just an unremarkable middle aged, middle class working Beef Sheep and Timber farmer,

Having had various careers in food and complex technology, I was drawn to South Gippsland for the clean and high rainfall environment, The bonuses of foraging and harvesting all manner of food as well as the option to grow some spectacular produce has really confirmed it was a great choice over a decade ago, We residents of South Gippsland are truly blessed with abundance .

My Family has long been residents of Gippsland, My Father was born in Mirboo over 85 years ago and his mother's family farmed at Ellinbank since the days of selection of the land .

I never saw local government in my crystal ball, yet I have absolutely enjoyed serving the community for the last 3 years and helping to bring back confidence in a stable democratically elected, functioning and cordial councillor group..

People often forget Farmers are the original Recycle / Reuse/ Repair and Repurpose trailblazers before it was trendy. We learnt it via necessity and frugality in the lean years.

I am passionate about the future of Agriculture and its continuing viability, but also know that our land needs to be healthy and respected to provide the best returns and a stable environment for our future.

EMMA MCKAY



I moved to South Gippsland in 2020 from Melbourne. I live in the hills near Foster with a beautiful view of the prom. I have lived in the hustle and bustle of Melbourne my whole life but moving to a small town surrounded by nature, farms and the ocean has been the best decision I have made. My husband and I love this area and are committed to making this our forever home.

I have years of experience in working and volunteering in the communities I have lived in. I have a strong sense of community and enjoy being involved with community groups creating positive and productive initiative that supports everyone. I have a particular interest in theatre and am on the Foster War Memorial Arts Centre and Foster Arts Music and Drama Association committees.

The reason I'm standing for council is to ensure that this beautiful part of the world remains a wonderful place to live and in tune with its natural surroundings. I hope to represent the people of South Gippsland on the council, putting your hopes and concerns forward to ensure accountability and that decisions are made consciously with proper thought for the future.

By being on council, I hope to ensure that the council remains financially sustainable. This in turn ensures that the council can help the local communities to thrive and remain viable. As a councillor an important part of the role is to provide support to navigate the services the council provides. These services include council response to emergency situations and support to enable people to find the assistance, help and the support they need.

STEVE FINLAY



About myself, I've lived and worked most of my life in South Gippsland and, with my wife, raised our 3 kids (and now 8 grandkids, who live not too far away) and been involved with sport, church and community groups.

The reason I'm standing for council is to represent the people of South Gippsland, and give the communities of Coastal Promontory an alternative candidate to vote for.

I'm over council overreach, the recent by-laws fiasco where neighbours were to be banned from giving away lemons, grass had to cut to a designated length and the many other restrictions is not what life in the country is all about.

Many will know of my involvement with the council watchdog South Gippsland Action Group, it's proposals and work to reduce council rates and waste.

A vote for me will be a vote for lower rates for all, a return to public presentations, open questions to council, and getting straight answers. Your councillors should stand up for you and for the community of South Gippsland. South Gippsland is a good place to live, let's keep it as free and natural as possible.

Steve Finlay, Candidate Coastal Promontory, South Gippsland Shire Council

MICHAEL POORE

No response received.

KEY DATES

25 OCTOBER – CLOSE OF VOTING AT 6.00PM

26 OCTOBER – ELECTION DAY

15 NOVEMBER – ALL ELECTIONS TO BE DECLARED

Art cubes Are Coming

The Community Centre is happy to OFFICIALLY announce that we will be hosting the South Gippsland ARTCUBES in January 2025 through until April 2025. It is a huge three month undertaking we have committed to that will take many man/woman hours to ensure it is a success for the town.

We see this as an opportunity to celebrate and showcase our incredibly creative and diverse community.

Our intention is to have a Carnival of Creativity with a bit of an emphasis on waste and exploring ideas on what can be done with the things we no longer need or want.

Art is a great way to explore new ideas and recycling of components.

We will be putting a call out for people to be involved in all levels of the artcube project:

- Making items for display, running workshops, building site props, creative thinkers to be housed in an Artcube for an agreed time, a roster of people to be onsite to talk to people about the cubes, the artists and the project.
- Any or all of these might be an hour a week of volunteering. We are hoping to connect with people outside our immediate circle of volunteers as well. You might be able to help from home.

January will be here in the blink of an eye! To kick the creative side of things off we will be starting with BUNTING.



Bunting Workshops

We are getting ready for the arrival of the Artcubes.
We need bunting!
Come along and help cut, sew or pick up a kit to take home and make.

Thursdays in
October
1.00 - 2.30
everything
supplied.





CRAFT ACTIVITIES WITH JORJA

THIS SCHOOL
HOLIDAYS
MON 30TH, WED 2ND +
THUR 3RD

- *ROCKET TOWERS
- *FASHION PARADES
- *MUMMIES
- *BEDROOM BUNTING
- *PINATAS
- *MUSIC MAKERS
- *GREEN THUMBS & WORM FARMS



\$10 PER CHILD
VENUS BAY COMMUNITY CENTRE
10.00 - 12.00





COMMUNITY ENERGY E-BUS

Venus Bay



Powered by community... for community.

Sunny Nine Months On!

"Sunny" has now been operating in our community for approximately 9 months and is part of a pilot project run primarily by volunteers that is looking into how community transport can be implemented in small regional communities where other forms of public transport are not viable or available.

How We've Been Using Sunny to Date

We have been using Sunny in a range of ways including running scheduled services to Leongatha and Wonthaggi. These trips are free and are about providing accessibility and independence to community members.

We also use "Sunny" for social outings to places of interest like Wilsons Promontory and community events like the Mirboo North Italian Fiesta, the Loch Food and Wine Festival and the Fish Creek Tea Cosy Festival.

We've also taken groups to Open Gippsland and Gurney's Cidery and to the Annameike Mein Exhibition in Sale. Our social events generally cost \$10 per person and have proved very popular with our community. Social events are promoted through the VBCC Facebook page and tickets can be purchased through Humanitix.

"Sunny" is also available for private hire from \$90 subject to distance and volunteer driver availability.

What's Coming Up

We will be heading to Meeniyah on **10 October** for the first time. This trip will be free and there will be time to enjoy some lunch at one of Meeniyah's fabulous eateries or do some shopping before we head back at around 2pm. We will also be ferrying passengers to and from the Flock Stock and Basil Spring Feast on 20 October. Tickets are selling fast so if you don't want to drive get in quick!

Review of Services

We are currently reviewing our services ahead of the summer peak, so we can make improvements that meet the needs of our community. Regardless of whether you've used "Sunny" occasionally or frequently or you've been on one of our social outings we would appreciate it if you could spend a few minutes of your time answering a few simple questions about your experience of "Sunny". You can complete the survey [here](#). If you need help completing the survey call 0403 108 199 or email venusbaycommunityebus@gmail.com.

Friends of Sunny Sponsorship

At the end of the 2 year pilot current funding arrangements will cease. As a community we will need to find creative ways to cover the costs of running "Sunny" our community e-bus. Some costs will be covered by donations for group events and private hire but we will also be looking for sponsorship. Later this year we will be launching the "Friends of the Venus Bay Community e-Bus" program where businesses with shared values and community members chip in to fund our on-going services. You can also chip in anytime by donating when visiting the Venus Bay Community Centre.



**COMMUNITY
ENERGY
E-BUS**

Venus Bay



Powered by community... for community.

October schedule

SUN	MON	TUE	WED	THU	FRI	SAT
	30 Regular Trip Wonthaggi and return leaves Venus Bay approximately 10.00	1	2	3	4 Regular Trip Leongatha and return leaves Venus Bay approximately 9.30	5
6	7	8	9	10 Trial new regular Meeniyam leaves Venus Bay approximately 10.00	11 Regular Trip Leongatha and return leaves Venus Bay approximately 9.30	12
13	14 Regular Trip Wonthaggi and return leaves Venus Bay approximately 10.00	15	16	17 Open Gippsland in Leongatha 5pm - 8pm	18 Regular Trip Leongatha and return leaves Venus Bay approximately 9.30	19
20 Shuttle service to Flock, Stock & Basil Feast event	21 Private Booking	22	23	24 Toora Artcubes visit	25 Regular Trip Leongatha and return leaves Venus Bay approximately 9.30	26
27	28 Regular Trip Wonthaggi and return leaves Venus Bay approximately 10.00	29	30	31		

Regular trips FREE through website
booking or phone

Special trips bookings via Humanitix

Private bookings. By negotiation

VENUS BAY COMMUNITY CENTRE

October at the Centre

2	10.00 - 12.00 5.00 - 6.30	Children's Holiday program Board games and cards
3	10.00 - 12.00 7.00 - 8.30	Children's Holiday program Ukulele group
6		Daylight savings starts
7	10.00 - 12.00 5.00 - 6.30	Plant group Men's Cooking
9	12.00 - 1.00 3.30 - 5.00	Free community lunch Freeform writing group
10	7.00 - 8.30	Ukulele group
13	9.00 - 4.00	Cheesemaking - Barry Roberts
14	10.00 - 12.00	Plant group
16	12.00 - 1.00 5.00 - 6.30	Free community lunch Knitting, crochet & stitch group
17	7.00 - 8.30	Ukulele group
21	10.00 - 12.00	Plant group
23	10.00 - 12.00	Free community lunch
28	7.00 - 8.30	Travel Tales - Canada / Alaska Ros & Terry
30	12.00 - 1.00 1.00 - 2.00	Free community lunch Dementia awareness talk
31	7.00 - 8.30	Ukulele group
	Coming in November	Sour Dough Bread making workshop

Tarwin Lower Community Health Centre

Monday to Friday 10am-2pm. 19 Walkerville Rd Tarwin Lower. Phone 03 5667 5680.

Nurse Practitioner Deb Garvey

Every Wednesday from 8am. Please book at the Health Centre or call and leave a message on 03 5667 5680.

Gippsland Art Trail

Come along and support your fabulous local artists. The Tarwin Lower Community Health Centre art exhibition will be open on Saturday the 12th & 19th of October from 12-4pm. Free entry.

Friday Friendship group

Are you registered with My Aged Care and looking for social activities? Friday Friendship group gets together for picnics, music, entertainment, games and more! Please contact Michelle at Gippsland Southern Health on 03 5654 2791.



Health Centre Gardening Bee

(First Saturday of each month) Saturday 5th October. 10am-11am followed by morning tea. Please bring gloves and a small plate of something to share if you can. Everyone welcome.

Pilates on Tuesdays mornings. Improve your strength and flexibility. Classes (\$15).

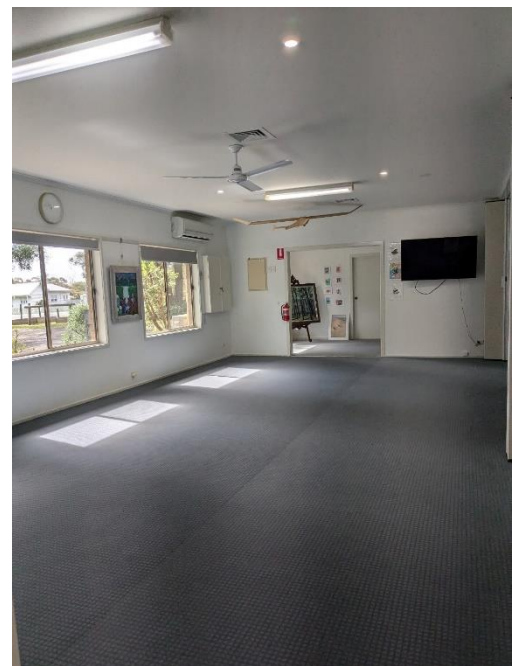
For class times and to book, please call Jeanette on 0409 252 863.

Red Cross Tuesday 1st October 1.30pm. Contact Glenda Arbuthnot (president) on 03 5663 5244.

Volunteering

The Community Health Centre runs on the dedication of local volunteers and the support of Gippsland Health Service and South Gippsland Shire Council. Volunteering is a great way to get involved in your community and meet new people. Please get in contact (03 5667 5680) if you are to help in any way (we are particularly on the look-out for people with computer/technical skills, and a new treasurer (as our valued current treasurer will be stepping down from the role later this year).

The centre also has wonderful spaces and availability if you have an idea for a social or health related new club, group or activity that you want to run.





Small Engines and Tractors will set up on Saturday

**All Welcome
Free admission
Saturday. Food Truck and Coffee on-site**

A FAMILY FUN DAY FOR ALL AGES TARWIN LOWER RECREATION RESERVE

Walkerville Road, Tarwin Lower

SUNDAY 3rd NOVEMBER, 2024 | 9.30am – 3.30pm

FB: Tarwin District Community Lifestyle and Auto Festival



- Lifestyle, Food, Market, Emergency Services (CFA, CERT, SES) Displays, Cars, Motorcycles, Trucks, Army Tank & Stationary Engines
- FREE CHILDREN'S ACTIVITIES.
- Display Presentations 1pm – 1.30pm approx.
 - Tractor Pull from 11.00 am

LIVE MUSIC

Entry: SUNDAY

- Show Cars Bikes and Trucks \$10.00
 - Passengers: \$10.00 per head
 - Patrons: \$10.00 per head
 - Children under 16: FREE

Stall enquiry

Garry Dobbs

0400 212 044

General Enquiry

David Miller

0407 956 211

Tractor/Engines Enquiry

John Harris

0438 635 286



Tarwin Lower Red Cross

The next meeting of the Tarwin Lower Red Cross will be Tuesday 1 October at 1.30 in the Tarwin Lower Health Centre, School road.

The members were pleased to have two members of Wonthaggi Ambulance come and give us an update on C.P.R. The techniques used in resuscitation are constantly being upgraded; and it was good to have practice on the dummy models as a reminder on what to do.

During the year two members have been presented with their 40 year badge awards for service in Red Cross – Margaret Fisher and Pam Mercer.

Currently Red Cross members are collecting items for inclusion in the Christmas Shoebox gift program. Items of great value are pens, pencils, paper, small toys, t-shirts (without logos), toothbrushes etc for presents for overseas aid to children.

During the year members also collect for local assistance program – Save the dignity; which provides basic necessities for women and girls in need. – Soap, combs, pens, paper, toothbrushes, toothpaste, period products, etc. The packages are forwarded to the Salvation Army in Leongatha for distribution.

Regards, Cheryl Bertrand. Tel 0408 391 035

VENUS BAY COMMUNITY CENTRE

ANNUAL GENERAL MEETING

The Venus Bay Community Centre is holding its ANNUAL GENERAL MEETING on SATURDAY 12 OCTOBER from 10am to 11am at the Centre.

All community members are welcome to attend. This is an opportunity to showcase the work of the Centre over the past 12 months.

Venus Bay Community Centre is bound by its Constitution, guided by it's Strategic Plan and governed by a Volunteer Board who meet 8 – 10 times each year.

If you would like to nominate for a position on the board, please reach out to President Wendy Lawrence on chairperson@vbcc.org.au or call in to the Centre to find out what is involved.

What's been happening



Visit from Belinda Snell (Olympic medalist - Basketball)

Book Fair at School



Having fun gardening

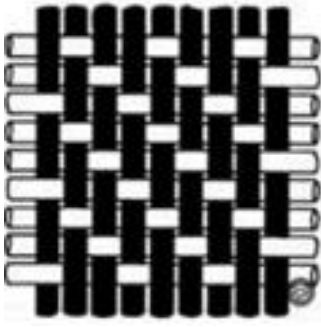
Book Week Dress Ups



Tarwin Lower Primary School



at Tarwin Lower PS ?



DENIM - A snapshot of key moments in our love affair with denim.

- **1850's** Denim is Born in France - The *Welt Weave*- 100% cotton, superstrong and highly robust. Italian's fall in love with it and Genoa becomes the worlds biggest producer of denim. The French name for Genoa is *Genes* and the word 'jeans' stuck.
- **1880's** Wild West America falls in love with how durable denim is. A fabric for outside workers Miners, Farmers, Cowboys(and gals) Levi incorporates rivets for extra strength and 501's are created. Lee and Wrangler start. It becomes a symbol of class divide, worn by slaves working in the Cotton field and plantations.
- **1950's** Post WW2. The rise of a new demographic – Teenagers! Jeans become synonymous with rebellion and subcultures and become part of youth subcultures uniform like the greasers. Hollywood underscores the focus on youth culture by making denim part of the Movie misfits in films such as Marlon Brando in *The Wild One*(1953) James Dean in *Rebel Without a Cause*(1955), Elvis Presley in *Jail House Rock*(1957) *West Side Story*(1961).
- **1960's** Post Vietnam War and Hippies want to get back to the land. Distressed looking denim becomes part of their identity. Think rips, holes and patchwork. Denim is worn as part of the Civil Rights Movement of the '60's to highlight the fight for equal rights.
- **1970's – 1980's** Branding your Bottom The rise and rise of Designer Jeans. Creation of Premium Denim by Designers such as Calvin Klein, Armani and Versace who put their labels on our backsides and created sexy marketing to go with it. Designers start weaving lycra and nylons into Denim and the Skinny Jeans makes a resurgence.
- **1990's** Hip Hop rebels and moves back to old school brands like Levis and Wrangle and oversized baggy baggy jeans.
- **Current Day** - China grows into the largest exporter and producer of denim products

Denim is easy and we love it. We love denim. 10:30 am at the Community Centre on the Thursday before the Grand Final. Looking around the main room I see twelve people. Eight of them are wearing jeans – there are different shades of blue and in a variety of styles – baggy, bootleg, skinny jeans, highcut, low cut, boyfriend.



Added to this is a sprinkling of denim shirts and jackets. A mumma cradles her baby – both in matching powder blue denim jeans.

Denim is a comfort, a go to for us humans, and jeans are wardrobe items that we slide and shimmy into on a day-to-day basis. The hardwearing adaptable nature of the fabric make jeans perfect for gardening, for travelling (by car, horse, bike or tractor). We can dress them up for a night out or roll into them the next morning to go get milk and bread from the shop. We love them. They zip up, button up. They hold it all together, they stretch to our shapes, to our bending, reaching, climbing, squatting and sitting or lying. No ironing (unless you iron your undies and sheets). They fold up into the cupboard or the draw, they squash into a suitcase or overnight bag. Or you can hang them if you want. There are those moments when you find \$20 in the pocket (fingers crossed before you wash) or even a tissue (fingers crossed not after you wash).

The world loves it!

Did you know that China is the main creator and distributor of denim products into the world? Its financial worth 27.1 Billions U.S. dollars in 2022 and expected to increase to over 35 Billion U.S. by 2027.

Did you also know that to make one pair of Jeans 2,900 litres of water and that 2.16 millions tons of waste is generated from the manufacturing of denim each year.



Venus Bay takes on the World!

Venus Bay Surf Lifesaving Club sent a team of 21 to compete at the Lifesaving World Championships held in Broadbeach Queensland from 20 August to 8th September.

With more than 5000 athletes and officials, the Lifesaving World Championships is the second largest global sporting event after the Olympics.

Competing in the surf, on the beach in IRBs and Surfboats the Venus Bay team came away with some incredibly impressive results.



The 5 person Masters Team of Paul Hoffman, Paul Mullarvey, Anthony Martin, Graeme Overall and Craig Watson all made individual finals with the most impressive results being Paul Hoffman 15th in the Surf race and Paul Mullarvey 12th in the Ironman.

Our 13 Strong IRB Contingent of Ella Arnold, Caitlyn Overall, Austin Timmins, Andrew Moore, Sabrina Lombardo, Sophie Glasson, Kieran Randall, Lachlan Hickey, Tyla McAlear, Alice Webb, Declan Woolf, Blake Harvey and Rhiannon McCorrison produced some amazing results.

This included a 2nd

place in the B Final of the Women's Mass Rescue (Tyla McAlear, Alice Webb, Declan Woolf and Rhiannon McCorrison). And an 8th place in the Women's Rescue B Final (Sabrina Lombardo, Sophie Glasson and Lachlan Hickey).



Club legend Allan Latto finished 4th in the world in the Surf Boats competing with lifesavers from Point Leo.

Team Manager Marty McCorrison and Competition Official Elise McCorrison completed the Venus Bay team.

Club President Kimberley Gee ESM said 'We couldn't be prouder of this fine group of lifesavers. They spend their summers keeping the beaches of Venus Bay safe and train hard in the off-season to compete at this incredibly high level. To have a team of 21 at the World Champs is a testament to the development and pathways of this great club.'



The Championships provided some great experience to compete at the top level against international athletes and Team Venus Bay is already in training for the 2026 World Championships in Morocco.

For information about joining or supporting the Venus Bay SLSC please jump on the website vbslsc.org.au.



Images.

1. Craig Watson, Paul Hoffman, Graeme Overall, Paul Mullarvey, Anthony Martin
2. Paul Mullarvey prepares for the Ironman
3. Allan Latto (centre) Venus Bay Legend rows for Pt Leo
4. Venus Bay IRB Team
5. Venus Bay World IRB team (L-R from rear). Andrew Moore, Blake Harvey, Kieran Randall, Austin Timmins, Ella Arnold, Sabrina Lombardo, Caitlyn Overall, Declan Woolf, Lachlan Hickey, Rhiannon McCorrison, Sophie Glasson, Marty McCorrison, Elise McCorrison, Alice Webb, Tyla McAlear



VENUS BAY ANGLING CLUB will hold the November Fishing Competition starting at 6am Friday 1st and finishing at 3.00pm Monday 4th November.

There will be a weigh in each day at the club between 4-6pm Friday, 4-8pm Saturday, 4-6 Sunday and the final weigh in 2.30 - 3.00 p.m. Monday when the winners will be announced.

1st Prize is a \$50.00 voucher from a local business. 1st prize for juniors is a trophy.

We are also reintroducing the "secret weight" prize, all fish weighed in are eligible to win except the 1st prize winner.

Our BBQ will be held on Saturday night, meat provided, and members and visitors are asked to bring along a hot dish/salad/dessert to share.

For non members there is a \$5.00 entry fee for the competition which covers you for the BBQ Saturday night as well.

We will have our raffle on Saturday night (with some great prizes) as well as the members draw which now stands at \$220.00! S

o make sure you're there to win it. Come along and join in the fun.





POP UP TRIP TOORA ART CUBES OCTOBER 24TH



**COMMUNITY
ENERGY
E-BUS**

Venus Bay



Powered by community... for community.

BOOK VIA HUMANITIX \$10

<https://events.humanitix.com/toora-artcubes>

1ST WEDNESDAY OF THE MONTH

Let's
Laugh &
Play with
Friends

MONTHLY EVENT

GAME NIGHT

WEDNESDAY
OCTOBER 2nd

AT VENUS BAY COMMUNITY CENTRE
05:00 - 6:30 PM

CARD & BOARD GAMES

Games will be available but feel free to bring your own.

GOLD COIN DONATION APPRECIATED

OPEN GIPPSLAND OUTING



VISIT OPEN GIPPSLAND LOUNGE BAR - LEONGATHA | Humanitix

Thursday 17 October Leaving 5pm, return by 8pm

Book a bus seat
via Humanitix
\$10.00



Venus Bay



Powered by community... for community.

UKULELE GROUP

\$5 PER WEEK

**EVERY
THURSDAY
7.00 - 8.30**



Travel Tales

A MONTHLY SERIES OF INFORMAL CHATS
ABOUT HOLIDAY ADVENTURES BY
INTREPID LOCALS

LIGHT SUPPER
PROVIDED

ALL WELCOME



**OCTOBER 28TH
7.00 - 8.30**

This month we are travelling to Canada and a glimpse of Alaska with Ros & Terry Shelley. A chance to chat to people who have been there and done that!

Gold coin donation appreciated

Tarwin Lower Union Church



Regular services:

Sunday 10.30 a.m. Anglican/Uniting

Saturday 5.30 p.m. Catholic

Liturgy/Communion on the Saturday before the 1st, 2nd, 4th and 5th Sunday of the month

Saturday 4 p.m.

Mass before the 3rd Sunday

Our mission is to be a welcoming, sharing Christian community

Coming up:

- * Women's discussion group: Thursday 3rd, 17th and 31st October at 10.30 a.m.
Join us as we read and discuss the book 'The art of happiness: a handbook for living' by the Dalai Lama
- * KYB (Bible study): Friday 11th and 25th October at 1.30 p.m.
Join us as we read and study 1st and 2nd Thessalonians



Freeform
writing group

*Dedicated writing
time & random
writing exercises to
inspire*

New Day

2nd Wednesday
of the Month

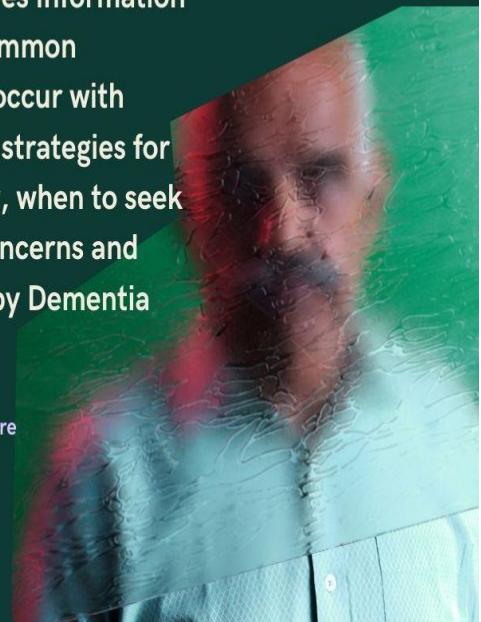
3.30 - 5.00

Gold coin appreciated

Worried about your memory?

This session provides information on memory and common changes that may occur with ageing. It provides strategies for improving memory, when to seek help about your concerns and services provided by Dementia Australia.

Venus Bay Community Centre
30th October
1.00





Do you need a bit of help?

Computer updating? Trying to synch photos?
Getting onto online services?

The world of computers and internet services can be frustrating and confusing.

While we can't fix everything, we are happy to help you here at the Venus Bay Community Centre.

After 12 on Monday and Thursdays we can usually find someone who might be able to assist you – we'll do our bes

Did you know you can also do PRINTING, SCANNING AND PHOTOCOPYING AT THE CENTRE?

We have a Co-Working space that is available for use – we have computers here to use, or you can bring your own and log onto our wifi.

DID YOU KNOW...?

2024 Garage Sale Trail

South Gippsland Shire Council is thrilled to be supporting the Australian Wide Garage Sale Trail campaign.

Being part of the Garage Sale Trail, whether you are selling or purchasing goods, is a great way to save many perfectly good items from ending up in land fill.

Registrations for the garage sale trail are officially open. So why not sift through the backs of your dusty cupboards and make a few bucks selling off those forgotten goods.

You can look for sales across the country using the interactive map and get first dibs of the sales taking place this November.

To register your garage sale or check out what sales are happening near you, head to: [Garage Sale Trail](https://www.garagesaletrail.com.au)



Gippsland Circular Futures Initiative



Small to medium sized Gippsland businesses and enterprises are invited to register their interest for this free program.

Circular Economy (CE) is a framework which reimagines how we can achieve new outcomes by eliminating waste, being more strategic with our resources and reducing our environmental footprint. Becoming a part of a network that supports CE solutions can improve your profitability, customer satisfaction and enhance your organisations long-term resilience.

The program:

Three workshops delivered by Federation University will cover understanding circular economy fundamentals, competitive advantages of embedded CE principles within your organisation for both your business and the community. As well as hands on support to use assessment tools and implement suitable practices into achievable actions.

Dates: October 16th, 23rd and 30th

Times: 10 am - 12:30 pm

Locations: Bairnsdale, Sale, Leongatha, Warragul and Morwell.

Two dedicated project officers will be available to guide you on your tailored CE journey.

Registrations close October 2nd

Scan the QR code or visit forms.office.com/r/3XZjcmnZqD

For further questions please email enquiries@gccn.org.au

This initiative is funded through Sustainability Victoria's Circular Economy Innovation Fund and is supported by the Gippsland Circular Economy Hub.



Mange Treatment Workshop



Due to rising reports of wombats with mange and the increase in transfer of this disease to koalas, South Gippsland Landcare Network is holding an information and treatment training session.

Guest speaker Simonne Flemming from Rescue to Release will cover

- Identifying mange in wombats and other wildlife
- Understanding how to correctly report mange and other injured wildlife
- Learning the different techniques available to treat mange in wombats
 - Registering as a volunteer with Mange Management Victoria
 - Plus more!

To attend the session you are NOT required to become a volunteer. You can attend just to learn more.

Morning tea provided

Questions to kirby@sgln.net.au

Thank you to Mange Management Victoria, Rescue to Release Inc and the Venus Bay Community Centre for their support of this event.

Mange Information and Volunteer Training Workshop

Share this event
Sun, 6 Oct, 9:30am - 1pm AEDT
Add to calendar
Venus Bay Community Centre
Venus Bay, Australia

South Gippsland Landcare Network
70 followers · [Contact host](#)

SOUTH GIPPSLAND
LANDCARE NETWORK



Rabbit Control Workshop and Field Demonstration

- Presentation and discussion about strategies for rabbit control with advice from Envirogain contractors
- Creating a rabbit/pest management plan for your property
- Learn mapping and data collection options
- Field demonstration and discussion of control techniques

When

Sunday 13 October 10:30-2:30
Lunch and refreshments provided

Where

Tarwin Lower Hall, 27 River Drive
Travel to nearby property, address provided on registration

More information

Kirby@sgln.net.au
0480 749 731

Register:

Scan QR code or
<https://events.humanitix.com/rabbit-control-workshop-and-field-demonstration>



We acknowledge the Traditional Owners of the land on which we work and meet.

This project is supported by the Victorian Government through the Partnerships against Pests program





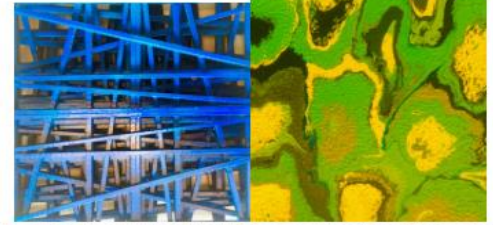
Art Connect South Gippsland

Open Studio Trail

October 12 - November 05, 2024



'UNSTILL LIFE'
EXHIBITION
AT
THIRSTY WORKS STUDIO
GALLERY
IN THE STUDIO SPACE



IN CONJUNCTION WITH SOUTH GIPPSLAND OPEN STUDIOS

OCT 11-NOV 5

ENTRIES OPEN FOR ANY LOCAL ARTISTS \$25 FOR 2 MEDIUM SIZED WORKS OR SEVERAL SMALLER ONES-WALL OR FLOOR PIECES

CONTACT THE GALLERY IN PERSON OR EMAIL

mandygunnart@hotmail.com

russell@sattavaceramics.com.au

20 *Thirsty Work Private Gallery*
45 River Drive
TARWIN LOWER
 Made up of Gallery Members
10am - 4pm Sat - Sun
 @thirstyworkgallery

24 *Norm Hanson Artist Studio*
10 Satellite Crescent
VENUS BAY
 Norm Hanson
 Photographer, artist, cartoonist
10am - 4pm Nov 2-5
 @normhansonart

22 *77 River Drive Artist Studio*
77 River Drive
TARWIN LOWER
 Patricia Freeman
 International and local art for sale
10am - 4pm
November 3 & 4

26 *Sandy Point Art Gallery*
33 Beach Parade
SANDY POINT
 Mary Shaw
 plus photos and gifts
10am - 4pm Sat - Sun & Nov 4-5
 sandypointgallery.com.au

21 *Tarwin Lower Comm. Health Centre*
19 Walkerville Road
TARWIN LOWER
 Art By local artists
 Fund Raiser for the Tarwin Lower Community Health Centre
12 - 4pm
October 12 & 19
 tarwinhealth.com.au

25 *Sarah Saridis Artist Studio*
57 Grevillia Street
WALKERVILLE
 Sarah Saridis
 Painter
10am - 4pm
November 2 - 5
 @sarahsaridis

23 *Mandy Gunn Studio/Gallery*
746 Walkerville Road
TARWIN LOWER
 Mandy Gunn
 Painter and Construction
10am - 4pm Sat - Sun & Nov 4
 @Mandy.gunn

27 *Art Cubes Toora*
Toora Hall Carpark
Dutton St, TOORA
 Cameron Hayes & Deborah Read, Sue Gilford, Bridget Nicholson and Kim McDonald
10am - 4pm, Sat & Sun
October 12 - 27
 @artcubestoora



Cape to Cape Resilience Project

engage.vic.gov.au/cape-cape-resilience-project

Help us make decisions for our changing coast.

We're seeking your feedback on the draft Cape to Cape Resilience Plan! The plan is a long-term strategy to manage coastal hazard impacts on the coastal areas around Inverloch, Tarwin Lower and Venus Bay.

Visit our Engage Victoria page to find out more and complete the survey by 11:59pm Sunday 13th October.

Regional Coastal Adaptation and Planning Information from DEECA- HAVE YOUR SAY.

We know there's been a lot of media recently about the erosion at Inverloch following the recent storms, and we're working with our RaSP partners on tackling some of the more immediate issues and monitoring the impacts on the dunes and beach. We've also been getting to work on the initial adaptation actions in the Cape to Cape Resilience Plan, starting with understanding where sand is available offshore and nearby, and engaging coastal engineers to create the detailed engineering designs to commence reconstructing the dunes to provide a protective buffer. This work is being funded by a \$3.3 million grant we received through the Commonwealth's Coastal and Estuarine Risk Mitigation Program

Do you want to learn more about the Cape to Cape Resilience Plan? To help you get a quick overview we've uploaded a new video, where our consultant from Alluvium explains the draft Plan. You can watch it here:

[Cape to Cape Resilience Plan explainer.](#)

If you want to understand more about the technical work behind the Cape to Cape Resilience Plan, there are two more videos that we created during the project, presented by our expert consultants.

- 1) Water Technology's coastal engineer presents the basics of the coastal hazard assessment in this video: [Understanding the Coastal Hazard Assessment](#)
- 2) Alluvium's environmental engineer and engagement expert explains the coastal adaptation planning process in this video: [A Strategic Approach to Adaptation](#)

We also have some terrific fact sheets that were developed to help community and stakeholders understand complex coastal processes, including how coastal protection structures work, what coastal modelling is, and what adaptation actions are.

All our fact sheets are on our website, But these are a good start:

[Coastal Processes and Hazards](#)

[Coastal Adaptation](#)

[Adaptation Actions](#)

THE BELOVED RESILIENCE TREE at Anderson's Inlet – Doyles Road beach has finally succumbed.





Volunteer with us - it's fun!

Do you have a few hours to spare? We are always looking for volunteers to help out at the community centre...do you have any particular skills you can contribute? Or perhaps you have a bit of time to spend helping with filing in the office or sorting donations for the Recycling enterprise?

Every bit counts and every bit is appreciated. We could not function without our fabulous team of volunteers.

So why not come and join in!

Situated at 27 Canterbury Road, Venus Bay.

Phone: 5663 7499, Send mail to Post Office Box 786, Venus Bay 3956

Email: info@vbcc.org.au Website: www.vbcc.org.au

Opening hours reflect the season - please check our website or Facebook for details

or call Alyson 0416 242 331

Venus Bay Community Centre is supported by:

Department of Families, Fairness and Housing, the Commonwealth Government, & South Gippsland Shire Council.

Our website is www.vbcc.org.au

Find current and back issues of Matter Of Fact on our website. Please contact us if you wish to be on our email distribution list.

